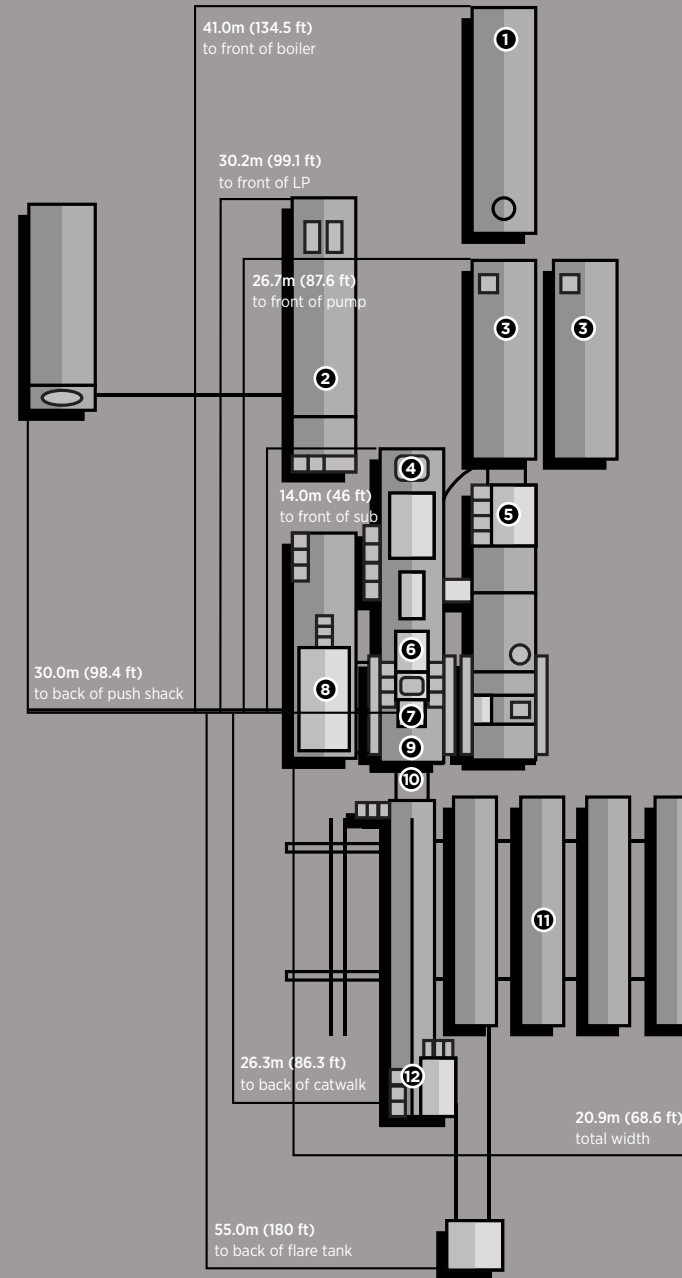


# RIG #3

111,000 DAN / 250,000 LBS  
MAX HOOKLOAD

3,000M / 10,000'  
VERTICAL DEPTH RATING



- ① **BOILER:**  
1 - 100hp Hurst Boiler with self-contained 10,000L (2,600 gal) fuel and 8m<sup>3</sup> (210 gal) water tank.
- ② **COMBINATION BUILDING:**  
2 - 540kw Stamford powered by 2 - 630hp Detroit Series 60 (14L) engines. Monitoring provided by a Woodward panel, which also synchronizes the two generators, and allows them to run in series. Also houses a 12 man change shack, and a 14,000L (3,700 gal) fuel storage tank.
- ③ **MUD PUMPS:**  
1 - F-1000 triplex pump, powered by 1 - Detroit Series 2000 (V-12-1005hp), w/XDR Pacific-Rim hydraulic clutch.
- ④ **MAST:**  
Hodgson Telescopic Range 3 Single Mast. Hydraulically raising (Max static hook load 133,000 daN (300,000 lbs) - 8 lines)
- ⑤ **MUD TANKS:**  
1 - 50m<sup>3</sup> (315 bbl), 3 Compartment circulating system, with additional pill tank and trip tank. Agitator situated in suction tank; low pressure system powered by 2 - 5 x 6 Mission Magnum C-pumps.
- ⑥ **DRAW WORKS:**  
TSM 500 (500hp), Powered by 1 - Detroit Series 60 (14L), w/6 speed Allison transmission. Auxiliary braking by Eaton 224-disc brake.
- ⑦ **TOP DRIVE:**  
Warrior 150 Split Block Top Drive with 2-Speed Haglund and Electric HPU (Max Static Load 133,000 daN (300,000 lbs)). Also has 8,000 daN (18,000 lbs) pull down capability. Max rotary @160rpm Max torque at 25,000 ft/lbs
- ⑦ **TABLE:**  
Howard Turner 17.5" (444mm) powered hydraulically-for auxiliary use only.
- ⑧ **WATER TANK/DOGHOUSE:**  
Hydraulic raising system-separate sub-storage room. Pason drilling recorder system. 60m<sup>3</sup> (380 bbl) useable water tank.
- ⑨ **SUBSTRUCTURE:**  
Hodgson Substructure. Hydraulic Self Leveling. KB-Ground 4.15m (14').
- ⑩ **BLOWOUT PREVENTERS:**  
1 - 279mm X 21,000 kPa (11" x 3,000 psi) - HEC Annular Preventer  
2 - 279mm X 21,000 kPa (11" x 3,000 psi) - HEC Single Gate Ram Preventers
- ⑪ **PIPE TUBS:**  
3 - Hydraulically Controlled Range 3 tubs  
1 - Loader Accessible Range 3 tub
- TUBULARS:**  
3000m (9,800') 102mm (4") - 4 FH, X-95 Drill pipe  
4 - 159mm (6 1/4") x 4 1/2" XH, Drill Collars  
8 - 127mm (5") x 3 1/2" IF, Drill Collars  
Available - 102mm (4") - 4 FH, HWDP
- ⑫ **CATWALK:**  
Hyduke Skate Catwalk, with hydraulic skate, and leveling racks attached. Also houses Nace trim 52mm & 76mm 21,000 kPa (2"x 3" 3,000 psi) Manifold.