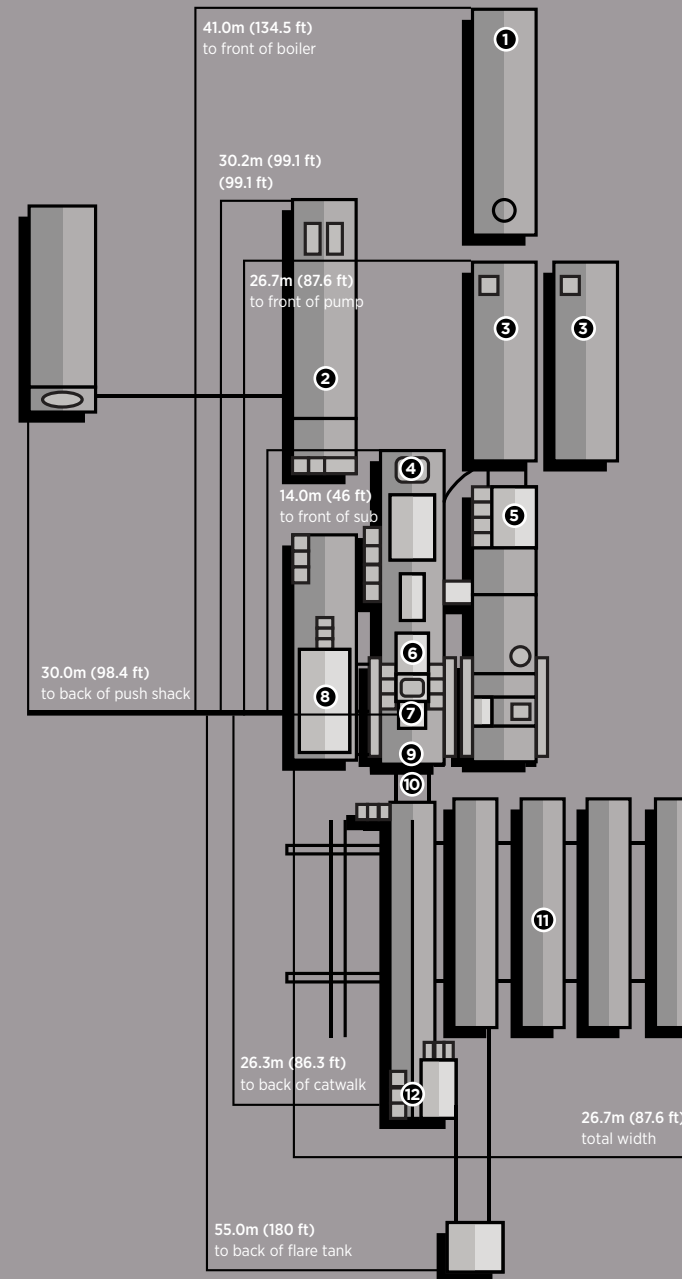


# RIG #4

111,000 DAN / 250,000 LBS  
MAX HOOKLOAD  
3,000M / 10,000'  
VERTICAL DEPTH RATING



- 1 BOILER:**  
1 - 100hp Hurst Boiler with self contained 10,000L (2,600 gal) fuel and 8m<sup>3</sup> (2110 gal) water tank.
- 2 COMBINATION BUILDING:**  
2 - 540kw Stamford powered by 2 - 630hp Detroit Series 60 (14L) engines. Monitoring provided by a Woodward panel, which also synchronizes the two generators, and allows them to run in series. Also houses a 12 man change shack, and a 10,000L (2,600 gal) fuel storage tank. Separate 10,000L (2,600 gal) extra fuel tank on skid.
- 3 MUD PUMPS:**  
2 - F-1000 triplex pumps, powered by 2 - Detroit Series 2000 (V-12-1005hp), w/XDR Pacific-Rim hydraulic clutch.
- 4 MAST:**  
Hodgson Telescopic Range 3 Single Mast. Hydraulically raising (Max static hook load 133,000 daN (300,000 lbs) - 8 lines)
- 5 MUD TANKS:**  
1 - 50m<sup>3</sup> (315 bbl), 4 Compartment circulating system, with additional pill tank and trip tank.  
2 - Agitators situated in suction tanks, low pressure system powered by 2 - 5 x 6 Mission Magnum C-pumps, one with 14" impellor for pumping aerated mud systems.
- 6 DRAW WORKS:**  
TSM 500 (500hp) Rated for 111,000 daN (250,000 lbs), Powered by 1 - Detroit Series 60 (14L), w/6 speed Allison transmission. Auxiliary braking by Eaton 224-disc brake.
- 7 TOP DRIVE:**  
Warrior 150 Split Block Top Drive with 2 - Speed Haglund and Electric HPU (Max Static Load 133,000 daN (300,000 lbs)). Also has 8,000 daN (18,000 lbs) pull down capability, Max TD rotary @160rpm Max continuous torque @25,000 ft/lbs
- 7 TABLE:**  
Rostel 17.5" (444mm) powered hydraulically-for auxiliary use only.
- 8 WATER TANK/DOGHOUSE:**  
Hydraulic raising system-separate sub-storage room. Pason drilling recorder system. 60m<sup>3</sup> (400 bbl) useable water tank.
- 9 SUBSTRUCTURE:**  
Hodgson Substructure. Hydraulic Self Leveling. KB-Ground 4.3m (14').
- 10 BLOWOUT PREVENTERS:**  
1 - 279mm X 21,000kPa (11" x 3,000 psi) HEC Annular  
2 - 279mm X 21,000kPa (11" x 3,000 psi) HEC Single Gate Ram
- 11 PIPE TUBS:**  
3 - Hydraulically controlled range 3 tubs  
1 - Loader Accessible range 3 tub
- TUBULARS:**  
3,000m (9,800') 102mm (4") - 4 FH, X-95 Drill pipe  
6 - 159mm (6 1/4") x 4 1/2" XH, Drill Collars  
12 - 127mm (5") x 3 1/2" IF, Drill Collars Available - 102mm (4") - 4 FH, HWDP
- 12 CATWALK:**  
Skate Catwalk, with hydraulic skate, and leveling racks attached. Also houses nace trim 52mm & 76mm 21,000kPa (2" x 3" 3,000 psi) Manifold.