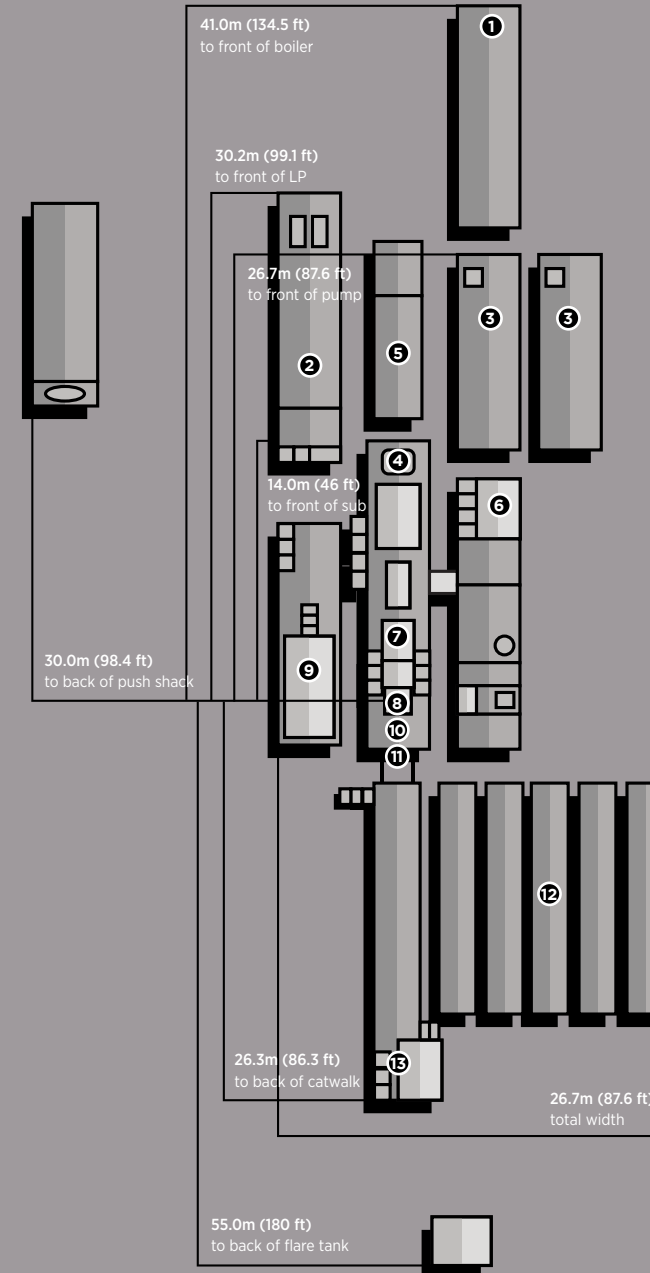


RIG #6

144,000 daN / 325,000 LBS
MAX HOOKLOAD

3,500M / 11,500'
VERTICAL DEPTH RATING



- ① BOILER:**
1 - 125hp Williams&Davis Boiler with self contained 8m³ (2,100 gal) water tank.
- ② COMBINATION BUILDING:**
2 - 540kw Stamford powered by 2 - 685hp Detroit Series 60 (14L) engines. Monitoring provided by a Woodward panel, which also synchronizes the two generators, and allows them to run in series. Also houses a 12 man change shack.
- ③ MUD PUMPS:**
2 - F-1000 triplex pump, powered by 2 - Detroit Series 2000 (V-12-1005hp), w/XDR Pacific-Rim hydraulic clutch.
- ④ MAST:**
Hodgson Telescopic Range 3 Single Mast. Hydraulically raising (Max static hook load 144,000 daN (325,000 lbs) - 8 lines)
- ⑤ HPU BUILDING**
Electric HPU with 35,000L (9,200 gal) fuel storage tank
- ⑥ MUD TANKS:**
1 - 75m³ (450 bbl), 4 Compartment circulating system, with additional pill tank and trip tank. 2 - Agitators situated in suction tanks, low pressure system powered by 2 - 5 x 6 Mission Magnum C-pumps, one with 14" impellor for pumping aerated mud systems.
- ⑦ DRAW WORKS:**
TSM 7000 (850hp) Rated for 144,000 daN (325,000 lbs), Powered by 1 - Detroit Series 60 (14L), w/6 speed Allison transmission. Auxiliary braking by Eaton 324-disc brake.
- ⑧ TOP DRIVE:**
Warrior 175 Split Block Top Drive with 2-Speed Haglund and Electric HPU (Max Static Load 155,000 daN (350,000 lbs)). Also has 8,000 daN (18,000 lbs) pull down capability. Max TD rotary @160rpm Max continuous torque @25,000 ft/lbs
- ⑧ TABLE:**
Rostel 17.5" (444mm) powered hydraulically-for auxiliary use only.
- ⑨ WATER TANK/DOGHOUSE:**
Hydraulic raising system-separate sub-storage room. Pason drilling recorder system. 60m³ (400 bbl) useable water tank.
- ⑩ SUBSTRUCTURE:**
Hodgson Substructure. Hydraulic Self Leveling. KB-Ground 4.3m (14.1').
- ⑪ BLOWOUT PREVENTERS:**
1 - 279mm X 21,000 kPa (11" x 3,000 psi) HEC Annular
2 - 279mm X 21,000 kPa (11" x 3,000 psi) HEC Single Gate Ram
- ⑫ PIPE TUBS:**
3 - Hydraulically controlled range 3 tubs
2 - Loader Accessible range 3 tubs
- TUBULARS:**
3,500m (11,500') 114mm (4 1/2") - 4 1/2" DS-40, S-135 Drill pipe
6 - 159mm (6 1/4") x 4 1/2" XH, Drill Collars
12 - 127mm (5") x 3 1/2" IF, Drill Collars Available - 114mm (4 1/2") - DS-40, HWDP
- ⑬ CATWALK:**
Skate Catwalk, with hydraulic skate, and leveling racks attached. Also houses nace trim 52mm (2") & 76mm (3") 21,000 kPa (3,000 psi) Manifold.