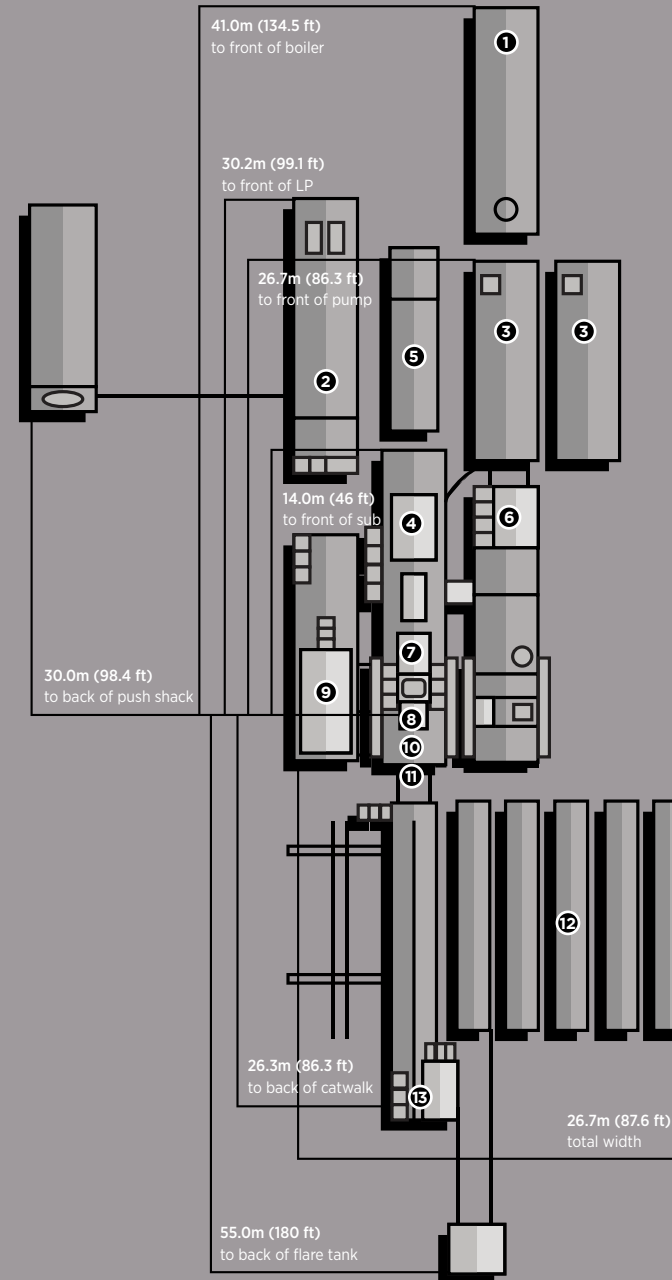
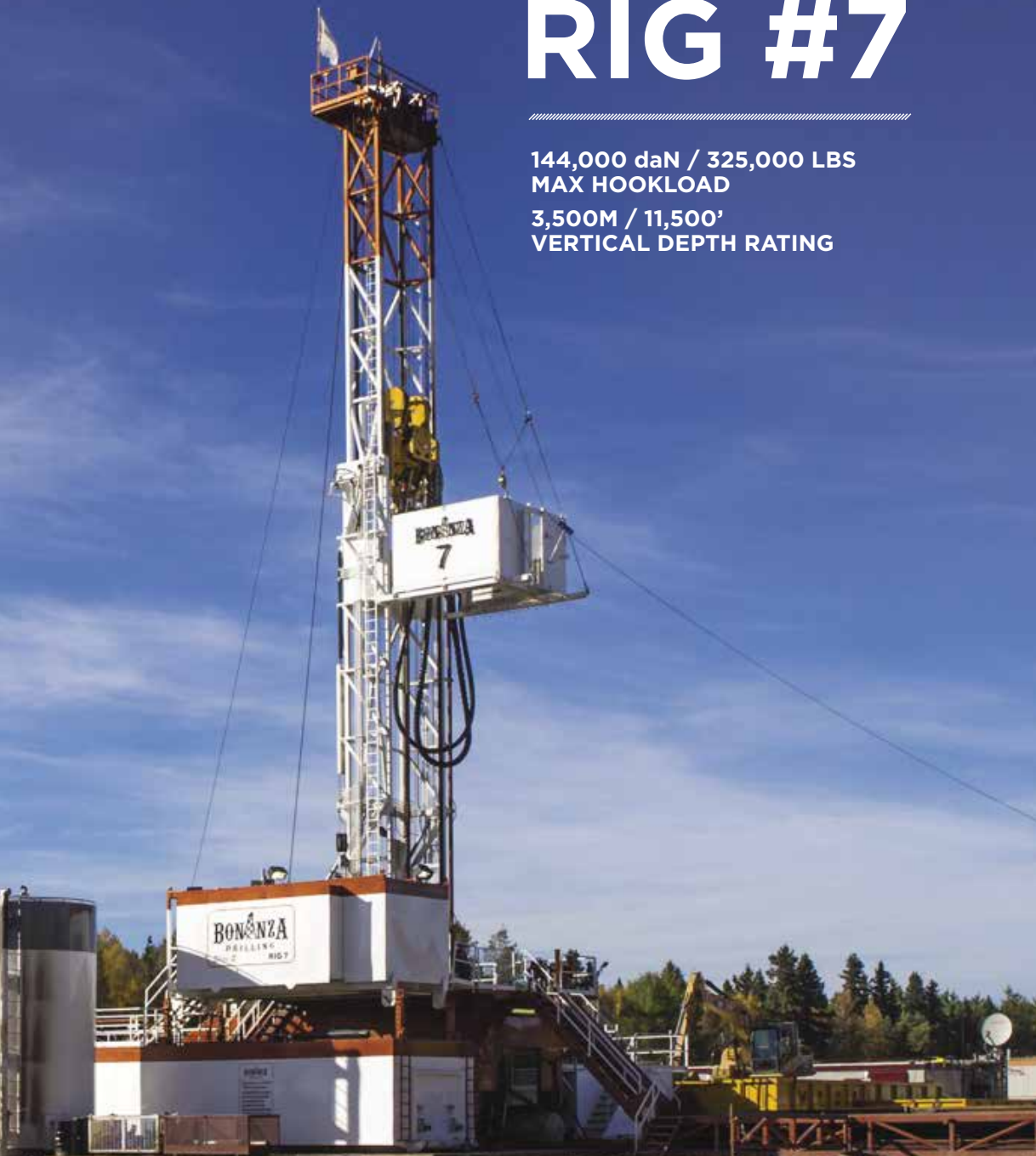


RIG #7

144,000 daN / 325,000 LBS
MAX HOOKLOAD

3,500M / 11,500'
VERTICAL DEPTH RATING



- ① **BOILER:**
1 - 125hp Hurst Boiler with self contained 8m³ (2100 gal) water tank.
 - ② **COMBINATION BUILDING:**
2 - 540kw Stamford powered by 2 - 685hp Detroit Series 60 (14L) engines. Monitoring provided by a Woodward panel, which also synchronizes the two generators, and allows them to run in series. Also houses Electric HPU for Top Drive.
 - ③ **MUD PUMPS:**
2 - F-1000 triplex pump, powered by 2 - Detroit Series 2000 (V-12-1005hp), w/XDR Pacific-Rim hydraulic clutch. Rated for 35,000 kPa (5,000 psi).
 - ④ **MAST:**
Hodgson Telescopic Range 3 Single Mast. Hydraulically raising (Max static hook load 144,000 daN (325,000 lbs) - 8 lines)
 - ⑤ **CHANGE SHACK/FUEL TANK**
12 - Man change shack with 35,000L (9,200 gal) TC-44 Fuel Tank
 - ⑥ **MUD TANKS:**
1 - 75m³ (450 bbl), 4 Compartment circulating system, with additional pill tank and trip tank.
2 - Agitators situated in suction tanks, low pressure system powered by 2 - 5 x 6 Mission Magnum C-pumps, one with 14" impellor for pumping aerated mud systems.
 - ⑦ **DRAW WORKS:**
TSM 7000 (850hp) Rated for 144000 daN. Powered by 1-Detroit Series 60 (14L), w/6 speed Allison transmission. Auxiliary braking by Eaton 324 disc brake.
 - ⑧ **TOP DRIVE:**
Warrior 175 Split Block Top Drive with 2-Speed Haglund and Electric HPU (Max Static Load 155000 daN (350,000 lbs)). Also has 8,000 daN (18,000 lbs) pull down capability. Max TD rotary @160rpm Max continuous torque @ 25,000 ft/lbs.
 - ⑨ **TABLE:**
Rostel 17.5" (444mm) powered hydraulically-for auxiliary use only.
 - ⑩ **WATER TANK/DOGHOUSE:**
Hydraulic raising system-separate sub-storage room. Pason drilling recorder system. 60m³ (400 bbl) useable water tank.
 - ⑪ **SUBSTRUCTURE:**
Hodgson Substructure. Hydraulic Self Leveling. KB-Ground 4.3m (14.1').
 - ⑫ **BLOWOUT PREVENTERS:**
1 - 279mm X 21,000 kPa (11" x 3,000 psi) HECI Annular
2 - 279mm X 21,000 kPa (11" x 3,000 psi) Townsend Type 82 Single Gate Ram Preventers
 - ⑬ **PIPE TUBS:**
3 - Hydraulically controlled range 3 tubs
3 - Loader Accessible range 3 tubs
- TUBULARS:**
3,500m (11,500') 114.3 mm (4 1/2"), DS-40, G-105 Drill pipe
6 - 159mm (6 1/4") - 4 1/2" XH, Drill Collars
12 - 127mm (5") - 3 1/2" IF, Drill Collars
Available - 114.3mm (4 1/2") DS-40 HWDP
- ⑬ **CATWALK:**
Skate Catwalk, with hydraulic skate, and leveling racks attached. Also houses nace trim 52mm (2") & 76mm (3") 21,000 kpa (3,000 psi) Manifold.