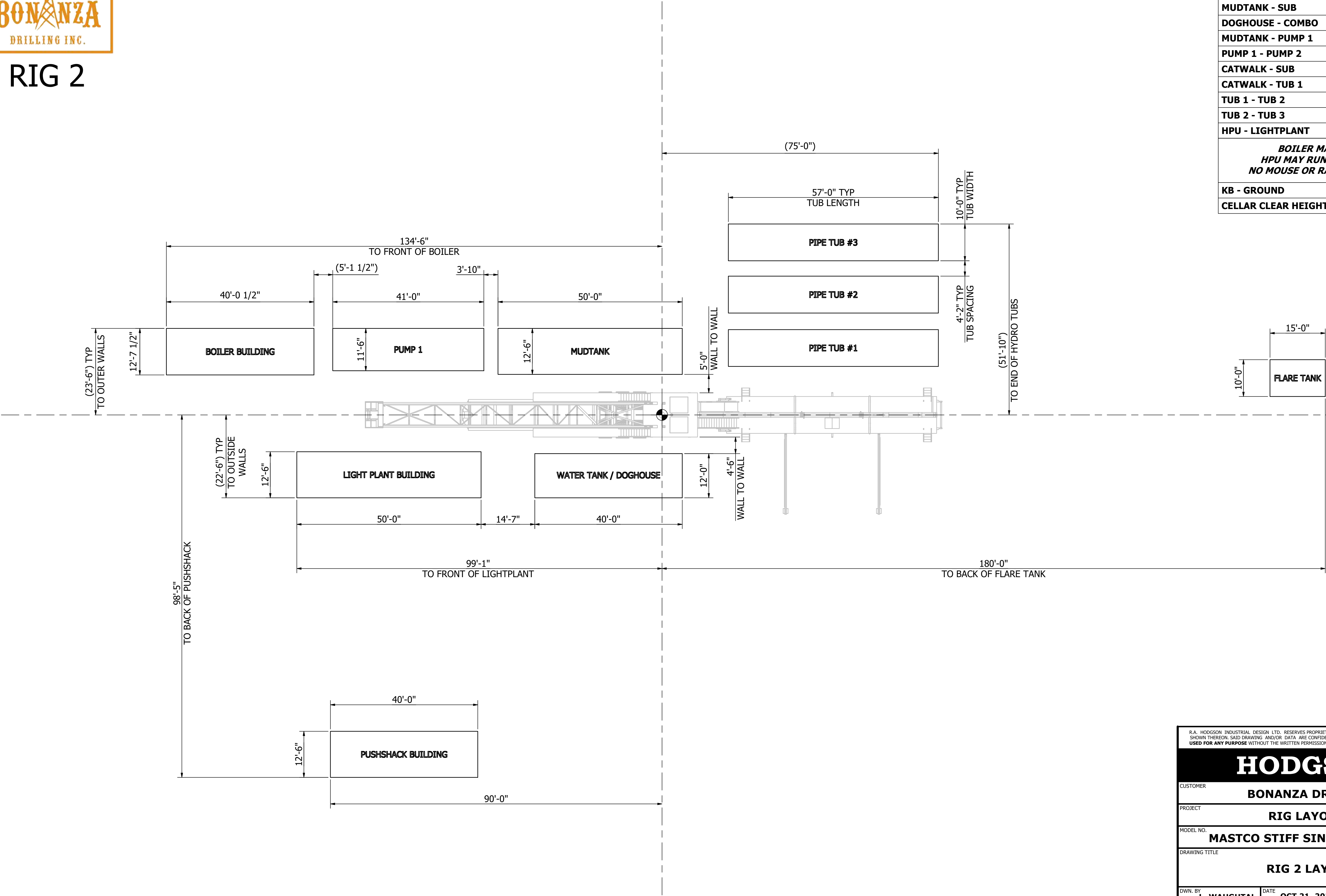




RIG 2



SPOTTING DISTANCES		
DOGHOUSE - SUB	WALL - WALL	54"
MUDTANK - SUB	WALL - WALL	60"
DOGHOUSE - COMBO	WALL - WALL	175"
MUDTANK - PUMP 1	SKID - SKID	46"
PUMP 1 - PUMP 2	WALL - WALL	N/A
CATWALK - SUB	SKID - SKID	108"
CATWALK - TUB 1	WALL - WALL	98"
TUB 1 - TUB 2	WALL - WALL	54"
TUB 2 - TUB 3	WALL - WALL	54"
HPU - LIGHTPLANT	N/A	N/A
BOILER MAY TURN 90° HPU MAY RUN INSIDE COMBO NO MOUSE OR RATHOLE REQUIRED		
KB - GROUND	4.0m (13'-1")	
CELLAR CLEAR HEIGHT	3.53m (11'-7")	

R.A. HODGSON INDUSTRIAL DESIGN LTD. RESERVES PROPRIETARY RIGHTS TO THIS DRAWING AND THE DATA SHOWN THEREON. SAID DRAWING AND/OR DATA ARE CONFIDENTIAL AND ARE NOT TO BE REPRODUCED OR USED FOR ANY PURPOSE WITHOUT THE WRITTEN PERMISSION OF R.A. HODGSON INDUSTRIAL DESIGN LTD.			
HODGSON			
CUSTOMER BONANZA DRILLING			
PROJECT RIG LAYOUTS			
MODEL NO. MASTCO STIFF SINGLE			
DRAWING TITLE RIG 2 LAYOUT			
DWN. BY L. WAUGHTAL	DATE OCT 21, 2024	SCALE 1" = 12'-0"	
CHK'D KJP	APP. RAH	DWG. NO. H8446-02	REV. 0



Rig 2

Inventory Listing

3,000m / 10,000' Vertical

14 Loads - Summer

15 Loads - Winter

Draw works:	TSM 850 , Powered by 1 - Detroit Series 60 (14L) 630hp, w/6 speed Allison transmission. Auxiliary braking by Eaton 324-disc brake.
Mud Pump:	1 - F1000 triplex pump, powered by 1 - Detroit Series 2000, w/XDR Pacific-Rim hydraulic clutch. Rated for 35,000 kPa / 5000 psi. Second F100 Pump available
Carrier-Substructure:	Mastco Carrier with 24-wheel tridem axle hydraulic, self-leveling trailer-substructure. 133,000 daN / 300,000 lbs Max Rotary Capacity. 133,000 daN / 300,000 lbs Max Setback Capacity. KB-Ground 4.0m (13'1"). Cellar Clear Height 3.53m (11'7"). 8 Wheel Booster included when required
Mast:	Mascto Range 3 Elite Stiff Mast - hydraulically raising (Max static hook load 133,000 daN / 300,000 lbs - 8 lines)
Top Drive:	FDS 1514 Split Block Top Drive with 2-Speed Haglunds CA140 and Electric HPU (Max Static Load 133,000 daN / 300,000 lbs). Max speed @ 165rpm. Max TD torque @ 28,000 ft/lbs. Max Drilling Torque @ 24,000 ft/lbs. Water-Course rated to 35,000 kPa / 5000 psi. Oscillation available. Axis Lighting Oscillation system available
Table:	ZP175 17.5" (444mm) powered hydraulically-for auxiliary use only.
BOP's:	1 - 229mm X 21,000 kPa (9" x 3,000 psi) - Steel-Tech TA Annular Preventer 2 - 229mm X 21,000 kPa (9" x 3,000 psi) - Steel-Tech TGR Single Gate Ram Preventers
Accumulator:	1 - 4 station 230L / 60 gal x 21,000 kPa / 3,000 psi PLC OLD accumulator, with N2 backup system.
Mud Tanks:	1 - 50m3 / 315bbl, 3 Compartment circulating system, with additional pill tank and trip tank. Agitator situated in suction tank; low pressure system powered by 2 – 5" x 6" Mission Magnum C-pumps.
Solids Control:	1 – Derrick FLC 504 3.5m3/min capacity Shaker. Screens available to 200 mesh.
Water Tank/Doghouse:	Hydraulic raising system-separate sub-storage room. Pason drilling recorder system. 60m3 / 380 bbl useable water tank.
Combination Building:	2 - 600kw Marathon Generators powered by 2 - 685hp Detroit Series 60 (14L) engines. Monitoring provided by a Woodward panel, which also synchronizes the two generators,

Last Edit Date: May 22/25 - CV

and allows them to run in series. Also Houses a 12 man change shack and a 25,000L / 6,600-gal fuel storage tank.

Catwalk:	Mastco Skate Catwalk, with hydraulic skate, and leveling racks attached. Also houses nace trim 52mm x 76mm x 21,000 kPa (2" x 3" x 3,000 psi) Manifold.
Pipe Tubs:	3 - Hydraulically controlled range 3 tubs
Tubulars:	2,500m / 8,200' – 114.3mm / 4 ½" x DS40, S-135 R3 Drill pipe 114.3mm / 4 ½" x DS40, R3 HWDP Available 159mm / 6 ¼" Drill Collars Available 203mm / 8" Drill Collars Available
Boiler:	1 - 100hp Liberty Boiler with self-contained 10,000L (2,600 gal) fuel and 8m3 (2,100 gal) water tank.