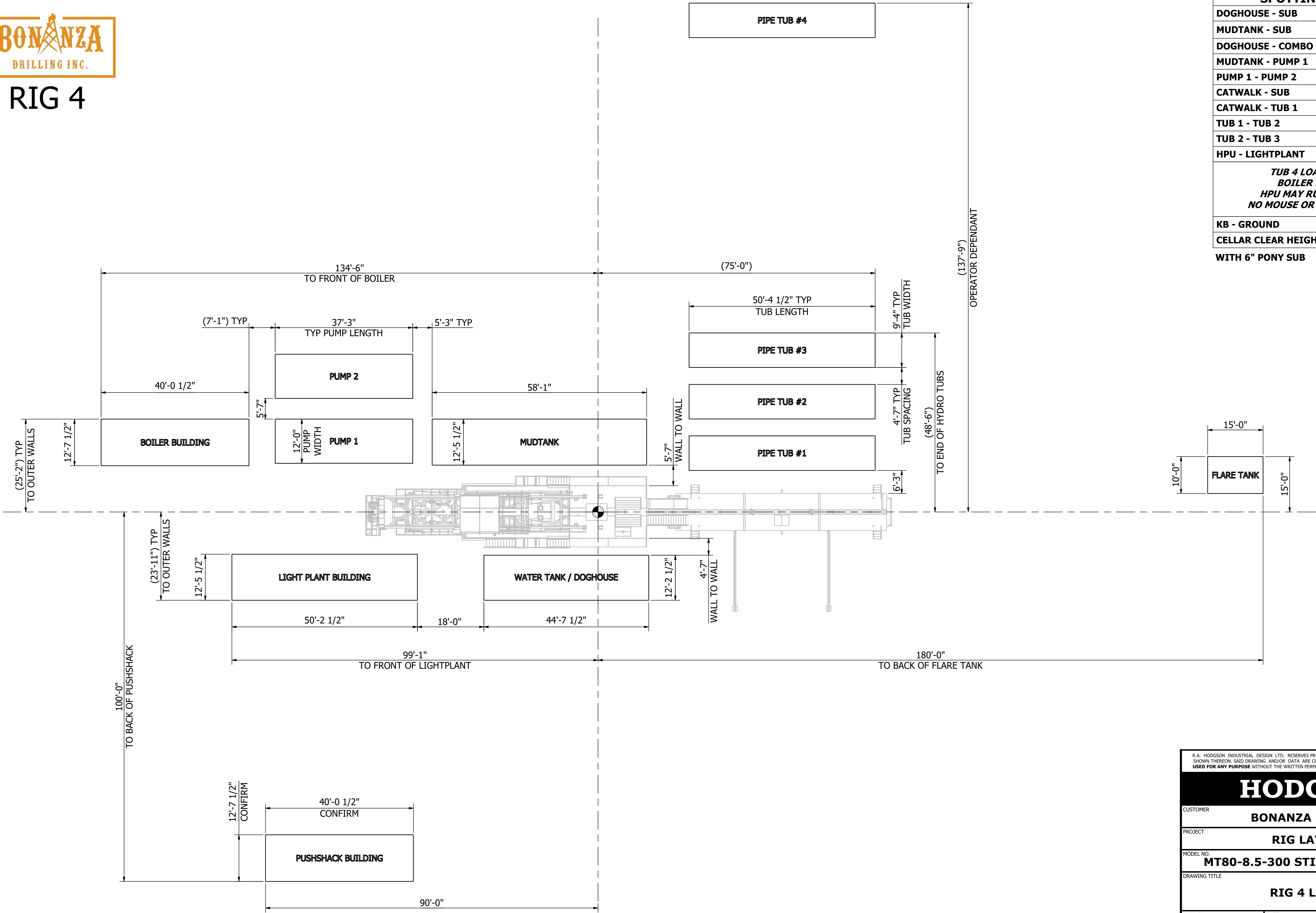




RIG 4



SPOTTING DISTANCES		
DOGHOUSE - SUB	WALL - WALL	55"
MUDTANK - SUB	WALL - WALL	67"
DOGHOUSE - COMBO	WALL - WALL	216"
MUDTANK - PUMP 1	SKID - SKID	63"
PUMP 1 - PUMP 2	WALL - WALL	67"
CATWALK - SUB	SKID - SKID	138"
CATWALK - TUB 1	WALL - WALL	75"
TUB 1 - TUB 2	WALL - WALL	55"
TUB 2 - TUB 3	WALL - WALL	55"
HPU - LIGHTPLANT	N/A	N/A
TUB 4 LOADER DOOR OUT BOILER MAY TURN 90° HPU MAY RUN INSIDE COMBO NO MOUSE OR RATHOLE REQUIRED		
KB - GROUND		4.2m (13'-9")
CELLAR CLEAR HEIGHT		3.74m (12'-3")

WITH 6" PONY SUB

R.A. HODGSON INDUSTRIAL DESIGN LTD. RESERVES PROPRIETARY RIGHTS TO THIS DRAWING AND THE DATA SHOWN THEREON. SAID DRAWING AND/OR DATA ARE CONFIDENTIAL AND ARE NOT TO BE REPRODUCED OR USED FOR ANY PURPOSE WITHOUT THE WRITTEN PERMISSION OF R.A. HODGSON INDUSTRIAL DESIGN LTD.

HODGSON

CUSTOMER

BONANZA DRILLING

PROJECT

RIG LAYOUTS

MODEL NO.

MT80-8.5-300 STIFF SGL.

DRAWING TITLE

RIG 4 LAYOUT

DWN. BY

L. WAUGHTAL

DATE

OCT 21, 2024

SCALE

1" = 12'-0"

CHK'D

KJP

APP.

RAH

DWG. NO.

H8446-04

REV.

0



Rig 4

Inventory Listing

3,000m (10,000') Vertical

17 Loads - Summer

18 Loads - Winter

Draw works:	TSM 500 (500hp) Rated for 112,000 daN / 250,000 lbs, Powered by 1 - Detroit Series 60 (14L), w/6 speed Allison transmission. Auxiliary braking by Eaton 224-disc brake.
Mud Pump:	2 - F1000 triplex pump, powered by 2 - Detroit Series 2000 (V12-1005hp), w/XDR Pacific-Rim hydraulic clutch. Rated for 35,000 kPa / 5000 psi
Substructure:	Hodgson Substructure. Hydraulic Self Leveling. KB-Ground 4.3m (14'1"). Cellar Clear Height 3.74m (12'3")
Mast:	Hodgson Telescopic Range 3 Single Mast. Hydraulically raising (Max static hook load 133,000 daN / 300,000 lbs - 8 lines)
Top Drive:	Warrior 150 Split Block Top Drive with 2 - Speed Haglund and Electric HPU (Max Static Load 133,000 daN / 300,000 lbs). Max TD rotary @ 160rpm Max continuous torque @ 25,000 ft/lbs. Water-Course rated for 28,000 kPa / 4000 psi
Table:	Rostel 17.5" / 444mm powered hydraulically-for auxiliary use only.
BOP's:	1 - 279mm X 21,000kPa (11" x 3,000 psi) HEC Annular Preventer 2 - 279mm X 21,000kPa (11" x 3,000 psi) HEC Single Gate Ram Preventers
Accumulator:	1 - 5 station 460L / 120 gal x 21,000kPa / 3,000 psi PLC Control Drilling accumulator, with N2 backup system.
Mud Tanks:	1 - 50m3 / 315 bbl, 4 Compartment circulating system, with additional pill tank and trip tank. 2 - Agitators situated in suction tanks, low pressure system powered by 2 - 5" x 6" Mission Magnum C-pumps, one with 14" impellor for pumping aerated mud systems.
Solids Control:	2 - Swaco Mongoose Dual Motion Elliptical Shaker. Screen available to 200 mesh
Water Tank/Doghouse:	Hydraulic raising system-separate sub-storage room. Pason drilling recorder system. 60m3 / 400 bbl useable water tank.
Combination Building:	2 - 540kw Stamford powered by 2 - 685hp Detroit Series 60 (14L) engines. Monitoring provided by a Woodward panel, which also synchronizes the two generators, and allows them to run in series. Also houses a 12 man change shack, and a 10,000L / 2,600 gal fuel storage tank. Separate 10,000L / 2,600 gal extra fuel tank on skid.
Catwalk:	Skate Catwalk, with hydraulic skate, and leveling racks attached. Also houses nace trim 52mm x 76mm x 21,000kPa (2" x 3" x 3,000 psi) Manifold.
Pipe Tubs:	3 - Hydraulically controlled range 3 tubs 1 - Loader Accessible range 3 tub
Tubulars:	3,000m / 9,800' - 114mm / 4 1/2" - DS40 R3 Drill pipe

Last Edit Date: Jan 20/2025 - CV

6 - 159mm / 6 ¼" x 4 ½" XH, R3 Drill Collars
12 - 127mm / 5" x 3 ½" IF, R3 Drill Collars
Available - 114mm / 4 ½" – DS40, R3 HWDP

Boiler:

1 - 100hp Hurst Boiler with self contained 10,000L / 2,600 gal) fuel and 8m3 / 2,110 gal water tank.