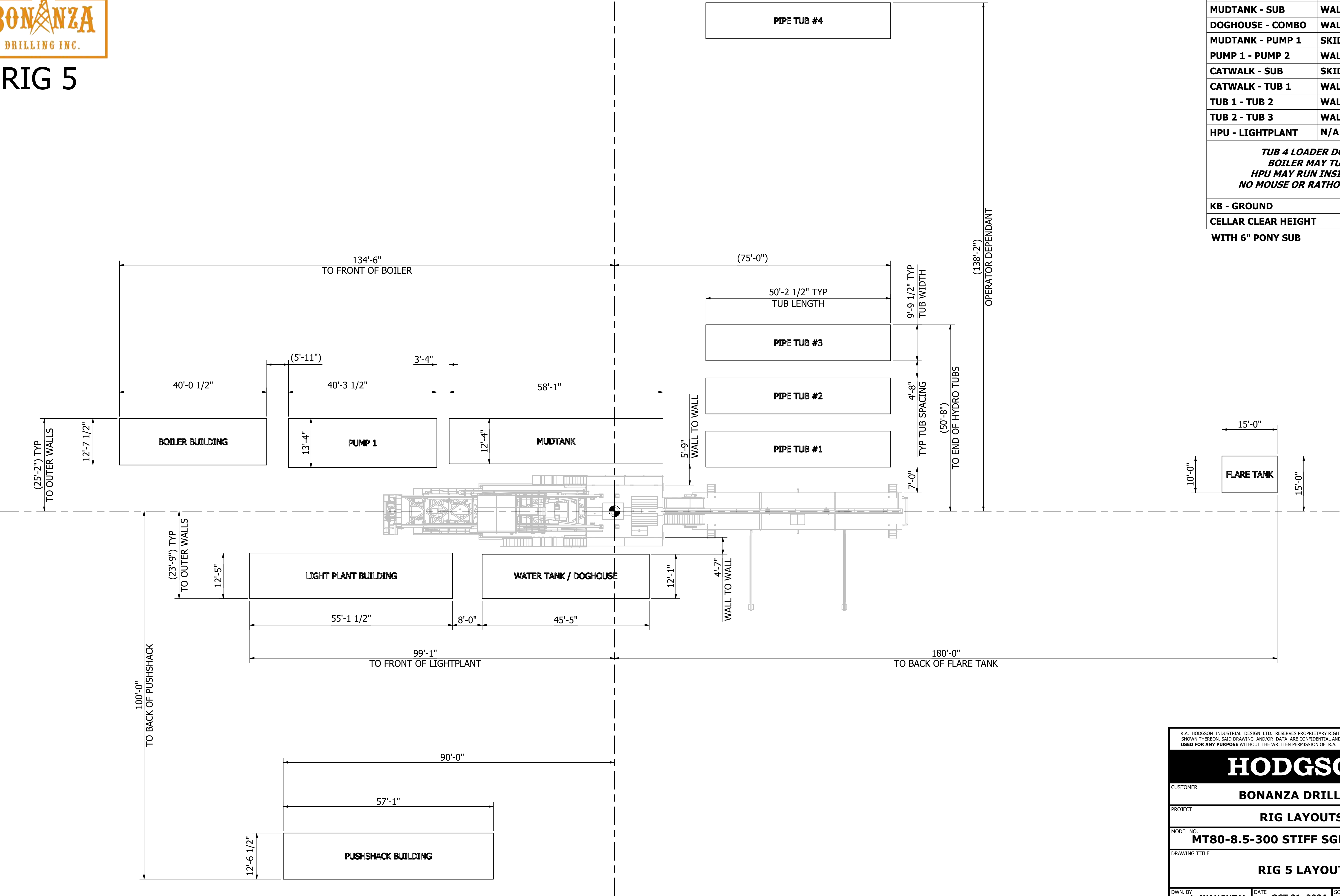


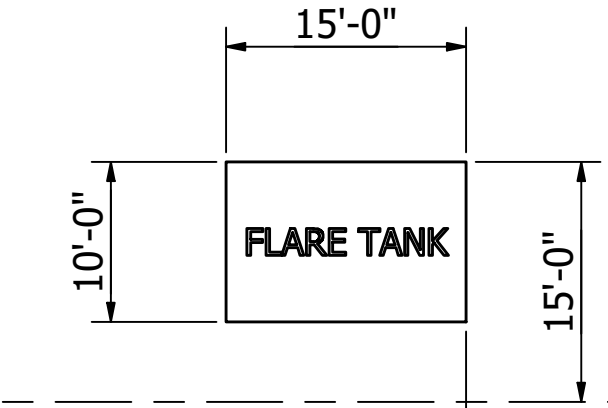


RIG 5



SPOTTING DISTANCES		
DOGHOUSE - SUB	WALL - WALL	55"
MUDTANK - SUB	WALL - WALL	69"
DOGHOUSE - COMBO	WALL - WALL	96"
MUDTANK - PUMP 1	SKID - SKID	40"
PUMP 1 - PUMP 2	WALL - WALL	66"
CATWALK - SUB	SKID - SKID	108"
CATWALK - TUB 1	WALL - WALL	84"
TUB 1 - TUB 2	WALL - WALL	56"
TUB 2 - TUB 3	WALL - WALL	56"
HPU - LIGHTPLANT	N/A	N/A
TUB 4 LOADER DOOR OUT BOILER MAY TURN 90° HPU MAY RUN INSIDE COMBO NO MOUSE OR RATHOLE REQUIRED		
KB - GROUND	4.2m (13'-9")	
CELLAR CLEAR HEIGHT	3.74m (12'-3")	

WITH 6" PONY SUB



R.A. HODGSON INDUSTRIAL DESIGN LTD. RESERVES PROPRIETARY RIGHTS TO THIS DRAWING AND THE DATA SHOWN THEREON. SAID DRAWING AND/OR DATA ARE CONFIDENTIAL AND ARE <b>NOT TO BE REPRODUCED OR USED FOR ANY PURPOSE</b> WITHOUT THE WRITTEN PERMISSION OF R.A. HODGSON INDUSTRIAL DESIGN LTD.			
HODGSON			
CUSTOMER BONANZA DRILLING			
PROJECT RIG LAYOUTS			
MODEL NO. MT80-8.5-300 STIFF SGL.			
DRAWING TITLE RIG 5 LAYOUT			
DWN. BY L. WAUGHTAL	DATE OCT 21, 2024	SCALE 1" = 12'-0"	
CHK'D KJP	APP. RAH	DWG. NO. H8446-05	REV. 0



## **Rig 5**

### **Inventory Listing**

### **3,000m (10,000') Vertical**

#### **17 Loads-Summer**

#### **18 Loads-Winter**

<b>Draw works:</b>	TSM 500 (500hp) Rated for 112,000 daN / 250,000 lbs, Powered by 1 - Detroit Series 60 (14L), w/6 speed Allison transmission. Auxiliary braking by Eaton 224-disc brake.
<b>Mud Pumps:</b>	2 - F1000 triplex pump, powered by 2 - Detroit Series 2000 (V12-1005hp), w/XDR Pacific-Rim hydraulic clutch. Max 125spm.
<b>Substructure:</b>	Hodgson Substructure. Hydraulic Self Leveling. KB-Ground 4.3m (14'1"). Cellar Clear Height 3.74m (12'3")
<b>Mast:</b>	Hodgson Telescopic Range 3 Single Mast. Hydraulically raising (Max static hook load 133,000 daN / 300,000 lbs - 8 lines)
<b>Top Drive:</b>	Warrior 175T Split Block Top Drive with 2 - Speed Haglund and Electric HPU (Max Static Load 155,000 daN / 350,000 lbs. Max TD rotary @ 160rpm Max continuous torque @ 25,000 ft/lbs
<b>Table:</b>	Rostel 17.5" (444mm) powered hydraulically-for auxiliary use only.
<b>BOP's:</b>	1 - 279mm X 21,000 kPa (11" x 3,000 psi) Spherical Annular Preventer 2 - 279mm X 21,000 kPa (11" x 3,000 psi) Townsend Pipe/Blind Single Gate Ram Preventer
<b>Accumulator:</b>	1 - 5 station 460L / 120 gal x 21,000 kPa / 3,000 psi PLC Control Drilling accumulator, with N2 backup system.
<b>Mud Tanks:</b>	1 - 64m3 / 400 bbl, 4 Compartment circulating system, with additional pill tank and trip tank. 2-Agitators situated in suction tanks; low pressure system powered by 2 - 5" x 6" Mission Magnum C-pumps, one with 14" impellor for pumping aerated mud systems.
<b>Solids Control:</b>	2 - Derrick Hyperpool – 4.0m3/min / 1000 gpm Capacity.
<b>Water Tank/Doghouse:</b>	Hydraulic raising system-separate sub-storage room. Electronic recorder system. 60m3 / 400 bbl useable water tank.
<b>Combination Building:</b>	2 - 540kw Stamford powered by 2 - 685hp Detroit Series 60 (14L) engines. Monitoring provided by a Woodward panel, which also synchronizes the two generators, and allows them to run in series. Also houses a 12 man change shack, and a 20,000L / 5,200 gal fuel storage tank.
<b>Catwalk:</b>	Skate Catwalk, with hydraulic skate, and leveling racks attached. Also houses nace trim 52mm x 76mm x 21,000 kPa (2" x 3" x 3,000 psi) Manifold.
<b>Pipe Tubs:</b>	3 - Hydraulically controlled range 3 tubs 1 - Loader Accessible range 3 tub

**Tubulars:**

3,000m / 9,800' - 114mm / 4 1/2" – DS40, S-135 R3 Drill pipe  
8 - 159mm / 6 1/4" x 4 1/2" XH, R3 Drill Collars  
12 - 127mm / 5" x 3 1/2" IF, R3 Drill Collars  
Available - 114mm / 4 1/2" x DS40, R3 HWDP

**Boiler:**

1 - 100hp Williams&Davis Boiler Dual Fuel with self contained 10,000L / 2,600 gal fuel and  
8m3 / 2,100 gal water tank.