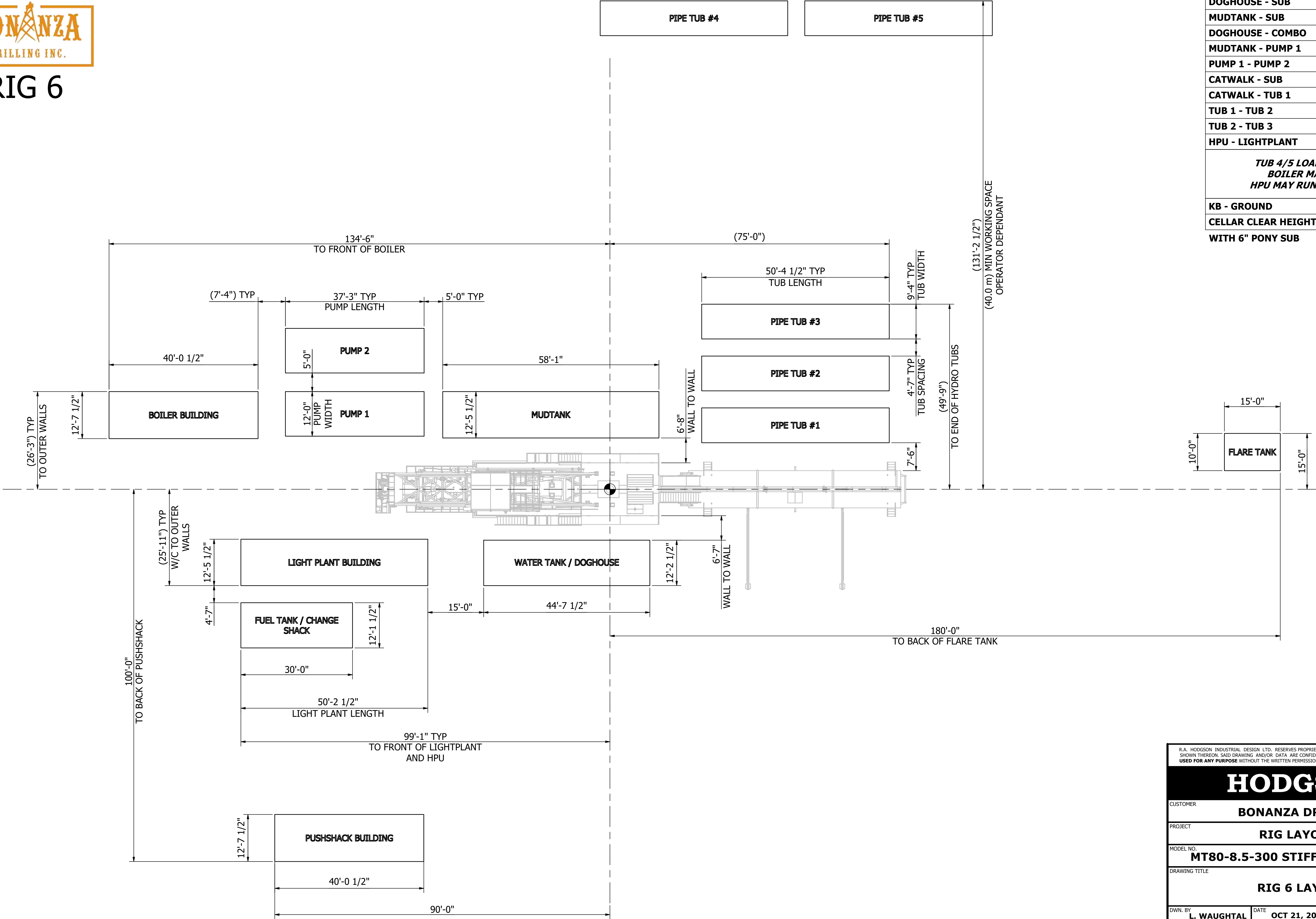




RIG 6



SPOTTING DISTANCES		
DOGHOUSE - SUB	WALL - WALL	80"
MUDTANK - SUB	WALL - WALL	80"
DOGHOUSE - COMBO	WALL - WALL	180"
MUDTANK - PUMP 1	SKID - SKID	60"
PUMP 1 - PUMP 2	WALL - WALL	60"
CATWALK - SUB	SKID - SKID	180"
CATWALK - TUB 1	WALL - WALL	90"
TUB 1 - TUB 2	WALL - WALL	55"
TUB 2 - TUB 3	WALL - WALL	55"
HPU - LIGHTPLANT	N/A	N/A
<b><i>TUB 4/5 LOADER DOOR OUT BOILER MAY TURN 90° HPU MAY RUN INSIDE COMBO</i></b>		
KB - GROUND		4.2m (13'-9")
CELLAR CLEAR HEIGHT		3.74m (12'-3")
WITH 6" PONY SUB		

R.A. HODGSON INDUSTRIAL DESIGN LTD. RESERVES PROPRIETARY RIGHTS TO THIS DRAWING AND THE DATA SHOWN THEREON. SAID DRAWING AND/OR DATA ARE CONFIDENTIAL AND ARE NOT TO BE REPRODUCED OR USED FOR ANY PURPOSE WITHOUT THE WRITTEN PERMISSION OF R.A. HODGSON INDUSTRIAL DESIGN LTD.

HODGSON

CUSTOMER

BONANZA DRILLING

PROJECT

RIG LAYOUTS

MODEL NO.

MT80-8.5-300 STIFF SGL.

DRAWING TITLE

RIG 6 LAYOUT

DWN. BY

L. WAUGHTAL

DATE

OCT 21, 2024

SCALE

1" = 12'-0"

CHK'D

KJP

APP.

RAH

DWG. NO.

H8446-06

REV.

0



## **Rig 6**

### **Inventory Listing**

### **3,500m (11,500') Vertical**

#### **19 Loads - Summer**

#### **20 Loads - Winter**

Draw works:	TSM 7000 (850hp) Rated for 144,000 daN / 325,000 lbs, Powered by 1 - Detroit Series 60 (14L), w/6 speed Allison transmission. Auxiliary braking by Eaton 324-disc brake.
Mud Pump:	2 - F1000 triplex pump, powered by 2 - Detroit Series 2000 (V12-1005hp), w/XDR Pacific-Rim hydraulic clutch. Rated for 35,000 kPa / 5000 psi
Substructure:	Hodgson Substructure. Hydraulic Self Leveling. KB-Ground 4.3m / 14'1". Cellar Clear Height 4.3m (14'1")
Mast:	Hodgson Telescopic Range 3 Single Mast. Hydraulically raising (Max static hook load 144,000 daN / 325,000 lbs - 8 lines)
Top Drive:	Warrior 175 Split Block Top Drive with 2-Speed Haglund and Electric HPU (Max Static Load 155,000 daN / 350,000 lbs). Max TD rotary @ 160rpm Max continuous torque @ 25,000 ft/lbs. Water-Course rated for 35,000 kPa / 5000 psi
Table:	Rostel 17.5" / 444mm powered hydraulically-for auxiliary use only.
BOP's:	1 - 279mm X 21,000 kPa (11' x 3,000 psi) HEC Annular Preventer 2 - 279mm X 21,000 kPa (11' x 3,000 psi) HEC Single Gate Ram Preventers
Accumulator:	1 - 5 station 460L / 120 gal x 21,000 kPa / 3,000 psi PLC Control Drilling accumulator, with N2 backup system.
Mud Tanks:	1 - 75m3 / 470 bbl, 4 Compartment circulating system, with additional pill tank and trip tank. 2 - Agitators situated in suction tanks, low pressure system powered by 2 - 5" x 6" Mission Magnum C-pumps, one with 14" impellor for pumping aerated mud systems.
Solids Control:	1 - Derrick FLC 504 Shale shaker - 3.5m3/min / 924 gpm Capacity.
Water Tank/Doghouse:	Hydraulic raising system-separate sub-storage room. Pason drilling recorder system. 60m3 / 400 bbl useable water tank.
Combination Building:	2 - 540kw Stamford powered by 2 - 685hp Detroit Series 60 (14L) engines. Monitoring provided by a Woodward panel, which also synchronizes the two generators, and allows them to run in series. Also houses a 12 man change shack.
Catwalk:	Skate Catwalk, with hydraulic skate, and leveling racks attached. Also houses nace trim 52mm / 2" x 76mm / 3" x 210,00 kPa / 3,000 psi Manifold.
Pipe Tubs:	3 - Hydraulically controlled range 3 tubs 2 - Loader Accessible range 3 tubs
Tubulars:	3,500m / 11,500' - 114mm / 4 1/2" x DS-40, S-135 R3 Drill pipe 6 - 159mm / 6 1/4" x 4 1/2" XH, R3 Drill Collars

Last Edit Date: Jan 20/2025- CV

**12 - 127mm / 5" x 3 1/2" IF, R3 Drill Collars**  
**Available - 114mm / 4 1/2" x DS-40, R3 HWDP (welded)**

**HPU Building:**                      **Electric HPU with 35,000L / 9,200 gal fuel storage tank**

**Boiler:**                              **1 - 125hp Williams&Davis Boiler with self contained 8m3 / 2,100 gal water tank.**