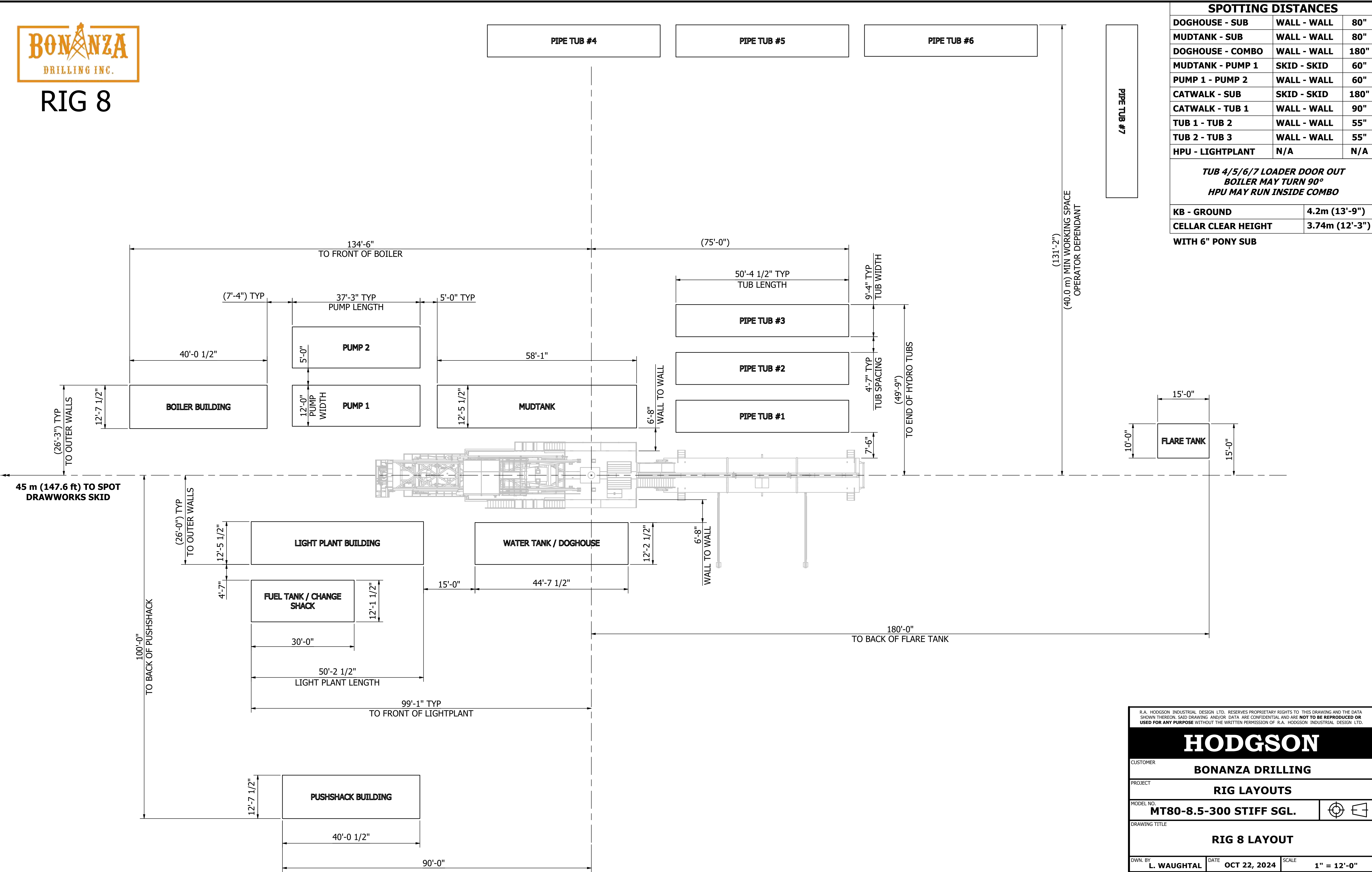
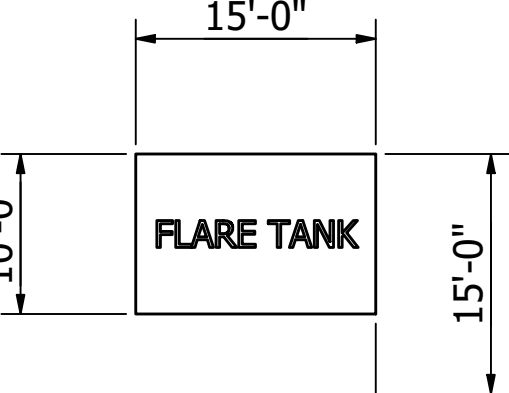




RIG 8



SPOTTING DISTANCES		
DOGHOUSE - SUB	WALL - WALL	80"
MUDTANK - SUB	WALL - WALL	80"
DOGHOUSE - COMBO	WALL - WALL	180"
MUDTANK - PUMP 1	SKID - SKID	60"
PUMP 1 - PUMP 2	WALL - WALL	60"
CATWALK - SUB	SKID - SKID	180"
CATWALK - TUB 1	WALL - WALL	90"
TUB 1 - TUB 2	WALL - WALL	55"
TUB 2 - TUB 3	WALL - WALL	55"
HPU - LIGHTPLANT	N/A	N/A
<b><i>TUB 4/5/6/7 LOADER DOOR OUT BOILER MAY TURN 90° HPU MAY RUN INSIDE COMBO</i></b>		
KB - GROUND	4.2m (13'-9")	
CELLAR CLEAR HEIGHT	3.74m (12'-3")	
<b>WITH 6" PONY SUB</b>		



R.A. HODGSON INDUSTRIAL DESIGN LTD. RESERVES PROPRIETARY RIGHTS TO THIS DRAWING AND THE DATA SHOWN THEREON. SAID DRAWING AND/OR DATA ARE CONFIDENTIAL AND ARE **NOT TO BE REPRODUCED OR USED FOR ANY PURPOSE** WITHOUT THE WRITTEN PERMISSION OF R.A. HODGSON INDUSTRIAL DESIGN LTD.

HODGSON

CUSTOMER

BONANZA DRILLING

PROJECT

RIG LAYOUTS

MODEL NO.

MT80-8.5-300 STIFF SGL.

DRAWING TITLE

RIG 8 LAYOUT

DWN. BY

L. WAUGHTAL

DATE

OCT 22, 2024

SCALE

1" = 12'-0"

CHK'D

KJP

APP.

RAH

DWG. NO.

H8446-08

REV.

0



## **Rig 8**

### **Inventory Listing**

### **3,500m / 11,500' Vertical**

#### **23 Loads - Summer**

#### **24 Loads - Winter**

<b>Draw works:</b>	TSM 7000 (850hp) Rated for 144,000 daN / 325,000 lbs, Powered by 1 - Detroit Series 60 (14L), w/6 speed Allison transmission. Auxiliary braking by Eaton 324-disc brake.
<b>Mud Pump:</b>	2 - F1000 triplex pump, powered by 2 - Detroit Series 2000 (V12-1005hp), w/XDR Pacific-Rim hydraulic clutch. Rated for 35,000 kPa / 5,000 psi.
<b>Substructure:</b>	Hodgson Substructure. Hydraulic Self Leveling. KB-Ground 4.3m / 14'1". Cellar Clear Height 4.30m (14'1")
<b>Mast:</b>	Hodgson Telescopic Range 3 Single Mast. Hydraulically raising (Max static hook load 144,000 daN / 325,000 lbs - 8 lines)
<b>Top Drive:</b>	Warrior 175 Split Block Top Drive with 2-Speed Haglund and Electric HPU (Max Static Load 155,000 daN / 350,000 lbs). Max TD rotary @ 160rpm Max continuous torque @ 25,000 ft/lbs. Water-Course rated for 35000 kPa / 5000 psi
<b>Table:</b>	Rostel 17.5" / 444mm powered hydraulically-for auxiliary use only.
<b>BOP's:</b>	1 - 279mm X 21,000 kPa (11' x 3,000 psi) HECI Annular Preventer 2 - 279mm X 21,000 kPa (11' x 3,000psi) Townsend Type 82 Single Gate Ram Preventers
<b>Accumulator:</b>	1 - 5 station 460L / 120 gal x 21,000 kPa / 3,000 psi PLC Control Drilling accumulator, with N2 backup system.
<b>Mud Tanks:</b>	1 - 75m3 / 450 bbl, 4 Compartment circulating system, with additional pill tank and trip tank. 2 - Agitators situated in suction tanks, low pressure system powered by 2 - 5" x 6" Mission Magnum C-pumps, one with 14" impellor for pumping aerated mud systems.
<b>Solids Control:</b>	2 - Derrick Hyperpool Shale shaker - 4.0m3/min / 1,000 gpm Capacity.
<b>Water Tank/Doghouse:</b>	Hydraulic raising system-separate sub-storage room. Pason drilling recorder system. 60m3 / 400 bbl useable water tank.
<b>Combination Building:</b>	2 - 540kw Stamford powered by 2 - 685hp Detroit Series 60 (14L) engines. Monitoring provided by a Woodward panel, which also synchronizes the two generators, and allows them to run in series. Also houses Top Drive HPU.
<b>Catwalk:</b>	Skate Catwalk, with hydraulic skate, and leveling racks attached. Also houses nace trim 52mm / 2" x 76mm / 3" x 21,000 kPa / 3,000 psi Manifold.
<b>Fuel Tank:</b>	12 Man Change shack with 35,000L / 9,200 gal fuel storage tank
<b>Pipe Tubs:</b>	3 - Hydraulically controlled range 3 tubs 4 - Loader Accessible range 3 tubs

Last Edit Date: Oct 31/24 - CV

**Tubulars:**

**3,500m / 11,500' - 114mm / 4 1/2" x DS-40, S-135 R3 Drill pipe**  
**6 - 159mm / 6 1/4" x 4 1/2" XH, R3 Drill Collars**  
**12 - 127mm / 5" x 3 1/2" IF, R3 Drill Collars**  
**Available - 114mm / 4 1/2" - DS-40, R3 HWDP**

**Boiler:**

**1 - 125hp Hurst Boiler with self contained 8m3 / 2,100 gal water tank.**