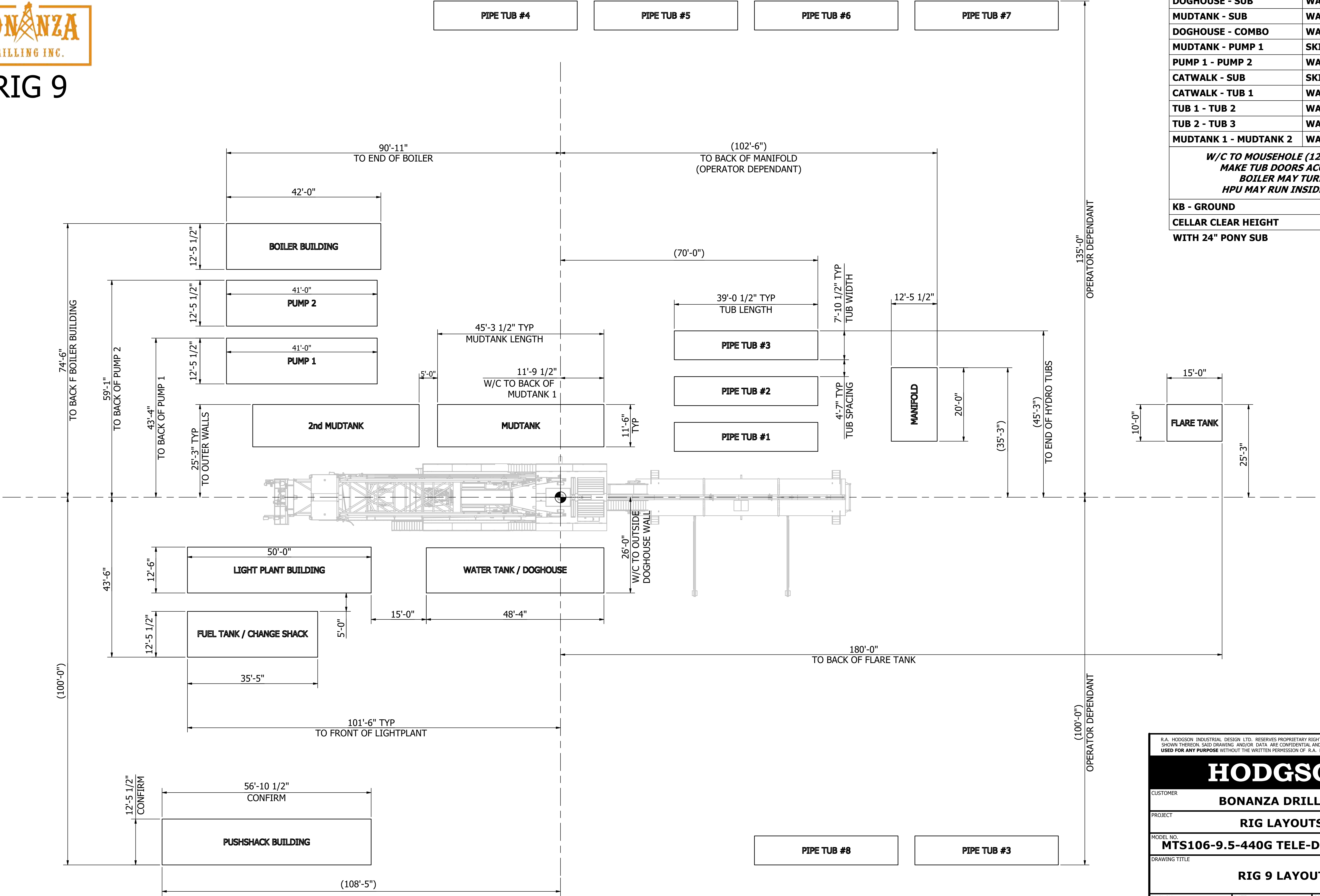




RIG 9




SPOTTING DISTANCES		
DOGHOUSE - SUB	WALL - WALL	80"
MUDTANK - SUB	WALL - WALL	80"
DOGHOUSE - COMBO	WALL - WALL	180"
MUDTANK - PUMP 1	SKID - SKID	60"
PUMP 1 - PUMP 2	WALL - WALL	60"
CATWALK - SUB	SKID - SKID	180"
CATWALK - TUB 1	WALL - WALL	90"
TUB 1 - TUB 2	WALL - WALL	55"
TUB 2 - TUB 3	WALL - WALL	55"
MUDTANK 1 - MUDTANK 2	WALL - WALL	60"

W/C TO MOUSEHOLE (12" @ 0°) - 44"
MAKE TUB DOORS ACCESSIBLE
BOILER MAY TURN 90°
HPU MAY RUN INSIDE COMBO

KB - GROUND	5.2m (17'-0")
CELLAR CLEAR HEIGHT	4.37m (14'-4")
WITH 24" PONY SUB	

R.A. HODGSON INDUSTRIAL DESIGN LTD. RESERVES PROPRIETARY RIGHTS TO THIS DRAWING AND THE DATA SHOWN THEREON. SAID DRAWING AND/OR DATA ARE CONFIDENTIAL AND ARE NOT TO BE REPRODUCED OR USED FOR ANY PURPOSE WITHOUT THE WRITTEN PERMISSION OF R.A. HODGSON INDUSTRIAL DESIGN LTD.

HODGSON

CUSTOMER		BONANZA DRILLING			
PROJECT		RIG LAYOUTS			
MODEL NO.		MTS106-9.5-440G TELE-DBL.			
DRAWING TITLE		RIG 9 LAYOUT			
DWN. BY		DATE		SCALE	
L. WAUGHTAL		OCT 23, 2024		1" = 12'-0"	
CHK'D		APP.		DWG. NO.	
KJP		RAH		H8446-09	
REV.				0	



Rig 9

Inventory Listing

4,500m / 15,000' Vertical

27 Loads (with matting and boiler)

Draw works:	TSM 850 10 x 1 1/8" drill line. Powered by 1 – Cat C18 (800bhp) w/6 speed Allison transmission. Auxiliary braking by Eaton 324-disc brake. Full PLC controlled.
Substructure:	Hodgson Substructure. Hydraulic Self Leveling. KB-Ground 5.2m / 17' with 24" Risers) Max Static Hook-load 200,000 daN / 450,000 lbs with full setback. Cellar Clear Height 4.73m (15'6")
Mast:	Hodgson Telescopic Range 2 Double Mast. Max static hook load 200,000 daN / 450,000 lbs - 10 lines. Racking board capacity 5,000m / 16,400' x 4.5" Drill Pipe
Top Drive:	Warrior 250T Unified Block Top Drive with 2-Speed Haglund and Electric HPU (Max Static Load 222,400 daN / 500,000 lbs). Max TD rotary @ 150rpm Max torque @ 30,000 ft/lbs. Water-course rated for 51mPa / 7,500 psi.
Iron Roughneck	60,000 ft/lb Make Up, 80,000 ft/lb Break out. Hydraulic wrench with spinner. Controls console PLC/HMI controlled in the doghouse, or remote controlled. Rig can also be fitted with hydraulic rams and rotary make/break tongs for manual backup if required.
Rotary Table:	Emsco Style 20.5" (520mm) powered hydraulically-for auxiliary use only.
Well Control:	Class IV, 279mm / 11" x 21,000 kPa / 3,000psi Blow out Preventers with a Class V 79mm / 3" x 35,000 kPa / 5,000 psi double gut manifold and Cameron Type M3 Style chokes (adaptable to fit remote actuator). 36" Degasser with 10" vent line installed inside the main mud tank. This rig also comes complete with a cellar spill prevention kit (catch can) & Vac system which is integral to the rig. Class V, 279mm / 11" x 35,000 kPa / 5,000 psi Blow out Preventers available also
Accumulator:	1 - 5 station 460L / 120 gal x 21,000 kPa / 3,000 psi PLC Control Drilling accumulator, with N2 backup system.
Mud Pumps: (Existing Pumps)	2 - F1300 triplex pump, powered by 2 - Detroit Series 2000 (V16-1340hp), w/Rouse 2 Speed Gear box and hydraulic clutch. Rated for 51mPa / 7,500 psi.
Mud Pumps: (Available as an upgrade)	2 - F1600 triplex pump, powered by 2 – 1120kw (1500hp) AC electric motors. Electrical power provided by 3 x V12-2000 (1005hp each) 700kw generators. Full PLC control system over AC power. Rated for 51mPa / 7,500 psi.

Last Edit Date: Jan 20/2025 - CV

Dual Mud Tanks:	<p>1 - Shaker Tank 65m3 (430 bbl), 4 Compartment circulating system, with additional pill tank and trip tank. Hydraulic Roof System included for Invert operation.</p> <p>1 - Suction Tank 65m3 (430 bbl) with mixing shack and pill tank. 5 - Agitators situated in suction tanks, low pressure system powered by 2 – 5 x 6 Mission Magnum C-pumps. Hydraulic Roof System included for Invert operation.</p>
Spill Control:	Rig comes with Katch Kan cellar spill system and 2m3 invert vac system – complete with integrated 2" lines manifolded for ease of vac access in critical areas.
Solids Control:	2 - Brandt King Cobra shale shakers - 4.0m3/min / 1,000 gpm capacity each-Adaptable slide to Dryer Shaker Possum Belly.
Water Tank/Doghouse:	Hydraulic raising system-separate sub-storage room. Pason drilling recorder system. 60m3 / 400 bbl useable water tank. Hydraulic slide on floor side houses drillers console and PLC/HMI controls.
Combination Building:	2 - 540kw Stamford powered by 2 - 685hp Detroit Series 60 (14L) engines. Monitoring provided by a Woodward panel, which also synchronizes the two generators, and allows them to run in series.
Catwalk:	Can-Rig Model 3000 Skate Catwalk with scoping deck-adjustable for 16' or 18' sub height optional. PLC/Remote controlled.
Pipe Tubs:	<p>3 - Hydraulically controlled range 2 tubs</p> <p>6 - Loader Accessible range 2 tubs</p>
Tubulars:	<p>500 - 114mm / 4 ½" x DS40, S-135 Range 2 Drill pipe</p> <p>80 - 114mm / 4 ½" x DS40 Range 2 Integral HWDP</p> <p>16 - 159mm / 6 ½" x 4 ½" XH, Range 2 Drill Collars</p> <p>3 - 203mm / 8" x 6 5/8" Reg Range 2 Drill Collars</p> <p>Additional Tubular sizes/quantities available.</p>
Boiler:	1 - 125hp Hurst Boiler with self-contained 8m3 / 2,100 gal water tank
Rig Mats:	18 - 8' X 40' 3 Runner Rig matting included in inventory