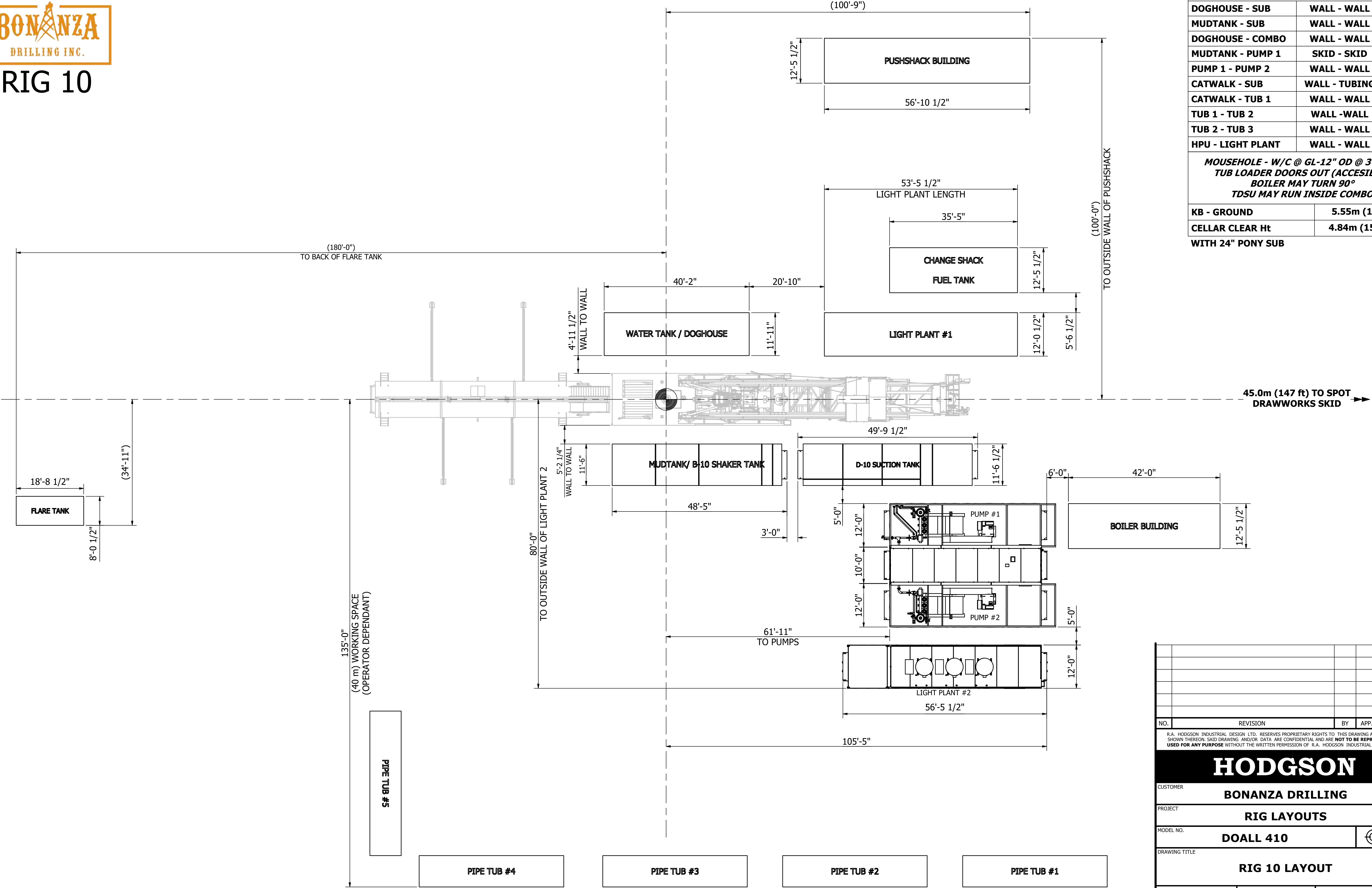




RIG 10




SPOTTING DISTANCES

DOGHOUSE - SUB	WALL - WALL	51"
MUDTANK - SUB	WALL - WALL	62"
DOGHOUSE - COMBO	WALL - WALL	250"
MUDTANK - PUMP 1	SKID - SKID	59"
PUMP 1 - PUMP 2	WALL - WALL	68"
CATWALK - SUB	WALL - TUBING	165"
CATWALK - TUB 1	WALL - WALL	N/A
TUB 1 - TUB 2	WALL -WALL	N/A
TUB 2 - TUB 3	WALL - WALL	N/A
HPU - LIGHT PLANT	WALL - WALL	60"

MOUSEHOLE - W/C @ GL-12" OD @ 3° - 60"
TUB LOADER DOORS OUT (ACCESIBLE)
BOILER MAY TURN 90°
TDSU MAY RUN INSIDE COMBO

KB - GROUND	5.55m (18'-2")
CELLAR CLEAR Ht	4.84m (15'-10")

WITH 24" PONY SUB

NO.	REVISION			BY	APP. DATE
R.A. HODGSON INDUSTRIAL DESIGN LTD. RESERVES PROPRIETARY RIGHTS TO THIS DRAWING AND THE DATA SHOWN THEREON. SAID DRAWING AND/OR DATA ARE CONFIDENTIAL AND ARE NOT TO BE REPRODUCED OR USED FOR ANY PURPOSE WITHOUT THE WRITTEN PERMISSION OF R.A. HODGSON INDUSTRIAL DESIGN LTD.					
HODGSON					
CUSTOMER					
BONANZA DRILLING					
PROJECT					
RIG LAYOUTS					
MODEL NO.					
DOALL 410					
DRAWING TITLE					
RIG 10 LAYOUT					
DWN. BY		DATE		SCALE	
L. WAUGHTAL		NOV 04, 2024		1"= 12'-0"	
CHK'D	KJP	APP.	RAH	DWG. NO.	H8446-10
				REV.	0



Rig 1

Inventory Listing

2,200m / 7,200' Vertical

12 Loads - Summer

13 Loads - Winter

Drawworks:	TSM 3,000 (400hp), Powered by 1 - Detroit Series 60 (14L), w/6 speed Allison transmission. Auxiliary braking by Eaton 124-disc brake.
Mud Pump:	1 - F1000 triplex pump, powered by 1 - Detroit Series 2000, w/ODR Pacific-Rim hydraulic clutch.
Carrier/Substructure:	Mastco Carrier with 24-wheel tridem axle hydraulic self-leveling trailer-substructure. 89,000 daN / 200,000 lbs Max Rotary Capacity. 80,000 daN / 180,000 lbs Max Setback Capacity. KB - Ground 4.0m (13'1"). Celler Clear Height 3.53m (11'7")
Mast:	Mascto Range 3 Elite Stiff Mast - hydraulically raising (Max static hook load 89,000 daN / 200,000 lbs - 8 lines).
Top Drive:	FDS 150T Split Block Top Drive with 2-Speed Haglund and Electric HPU (Max Static Load 133,000 daN / 300,000 lbs). Max Speed @ 180rpm Max Torque @ 20,000ft/lbs.
Table:	Howard Turner 17.5" (444mm) powered hydraulically-for auxiliary use only.
BOP's:	1 - 229mm X 21,000 kPa (9" x 3,000 psi) Steel-Tech TA Annular Preventer. 2 - 229mm X 21,000 kPa (9" x 3,000 psi) Steel-Tech TGR Single Gate Ram Preventers.
Accumulator:	1 - 4 station 230L / 60 gal x 21,000 kPa / 3,000 psi PLC OLD accumulator, with N2 backup system.
Mud Tanks:	1 - 50m3 (315 bbl), 3 Compartment circulating system, with additional pill and trip tank. Agitator situated in suction tank; low pressure system powered by 2 - 5 x 6 Mission Magnum C-pumps.
Solids Control:	1 - Derrick FLC 504 Shale Shaker. Screen available to 200 mesh.
Water Tank/Doghouse:	Hydraulic raising system-separate sub-storage room. Pason drilling recorder system. 60m3 (380 bbl) useable water tank.
Combination Building:	2 - 590kw Marathon Generators powered by 2 - 685hp Detroit Series 60 (14L) engines. Monitoring provided by a Woodward panel, which also synchronizes the two generators, and allows them to run in series. Houses a 12 man change shack, and contains a 14,000L / 3,700 gal Fuel Tank.
Catwalk:	Mastco Skate Catwalk, with hydraulic skate, and leveling racks attached. Also houses NACE trim 52mm x 76mm x 21,000 kPa (2" x 3" x 3,000 psi) manifold.
Pipe Tubs:	3 - Hydraulically controlled range 3 tubs.
Tubulars:	2200m / 7,200' 102mm / 4" x 4" FH, X-95 R3 Drill pipe 4 - 159mm / 6 1/4" x 4 1/2" XH, R3 Drill Collars 8 - 127mm / 5" x 3 1/2" IF, R3 Drill Collars

Last Edit Date: Jan 20/2025 - CV

Available - 102mm / 4" x 4" FH, R3 HWDP

Boiler:

1 - 100hp Liberty Boiler with self-contained 10,000L / 265 gal fuel and 8m3 / 2110 gal water tank.