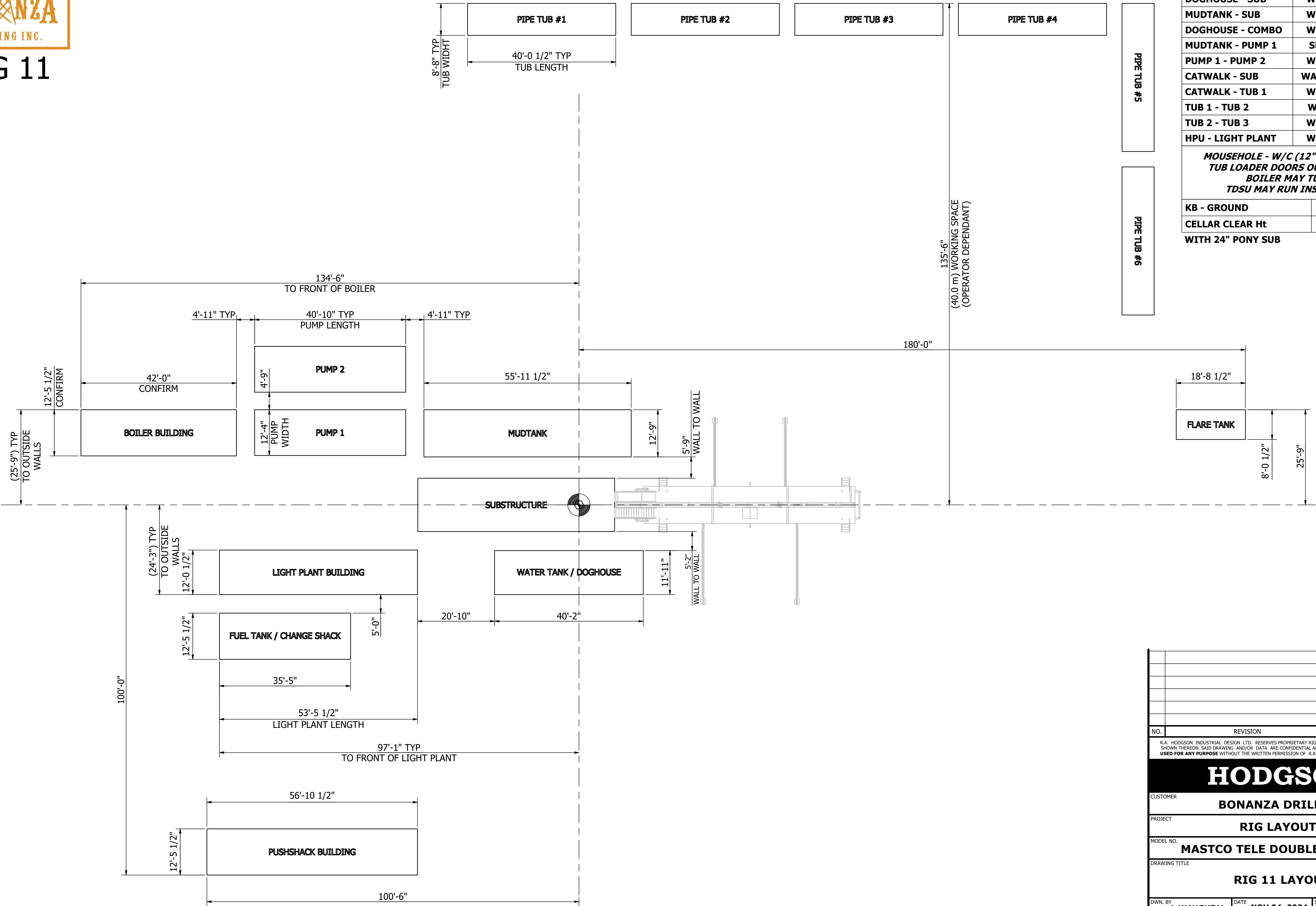




RIG 11



SPOTTING DISTANCES

DOGHOUSE - SUB	WALL - WALL	62"
MUDTANK - SUB	WALL - WALL	69"
DOGHOUSE - COMBO	WALL - WALL	250"
MUDTANK - PUMP 1	SKID - SKID	59"
PUMP 1 - PUMP 2	WALL - WALL	57"
CATWALK - SUB	WALL - TUBING	165"
CATWALK - TUB 1	WALL - WALL	70"
TUB 1 - TUB 2	WALL -WALL	N/A
TUB 2 - TUB 3	WALL - WALL	N/A
HPU - LIGHT PLANT	WALL - WALL	60"

MOUSEHOLE - W/C (12" OD @ 2.5°) - 48"
TUB LOADER DOORS OUT (ACCESIBLE)
BOILER MAY TURN 90°
TDSU MAY RUN INSIDE COMBO

KB - GROUND	5.55m (18'-2")
CELLAR CLEAR Ht	4.84m (15'-10")

WITH 24" PONY SUB

NO.	REVISION	BY	APP.	DATE
-----	----------	----	------	------

R.A. HODGSON INDUSTRIAL DESIGN LTD. RESERVES PROPRIETARY RIGHTS TO THIS DRAWING AND THE DATA SHOWN THEREON. SAID DRAWING AND/OR DATA ARE CONFIDENTIAL AND ARE NOT TO BE REPRODUCED OR USED FOR ANY PURPOSE WITHOUT THE WRITTEN PERMISSION OF R.A. HODGSON INDUSTRIAL DESIGN LTD.

HODGSON

CUSTOMER
BONANZA DRILLING

PROJECT
RIG LAYOUTS

MODEL NO.
MASTCO TELE DOUBLE



DRAWING TITLE
RIG 11 LAYOUT

DWN. BY
L.WAUGHTAL

DATE
NOV 04, 2024

SCALE
1"= 12'-0"

CHK'D
KJP

APP.
RAH

DWG. NO.
H8446-11

REV.
0



Rig 11

Inventory Listing

3,600m (12,000') Vertical

24 Loads (with matting and boiler)

Draw-works:	TSM 850 Rated for 173,000 daN (390,000 lbs) 10 x 1 1/8" drill line. Powered by 1 - Detroit Series 2000 w/6 speed Allison 6620 transmission. Auxiliary braking by Eaton 324-disc brake.
Substructure:	<p>Mastco Substructure. Hydraulic Self Leveling. Max Static Hook-load 160,000 daN (360,000 lbs) with full setback.</p> <p>Cellar Clear Ht: 4.38m (14.4') with 6" risers 4.84m (15.9') with 24" riser</p> <p>KB-Ground: 5.10m (16.7') with 6" risers 5.55m (18.2') with 24" risers.</p>
Mast:	Mastco Telescopic Range 2 Double Mast. Max static hook load 160,000 daN (360,000 lbs) - 10 lines. Racking board capacity 4200m (13,800') x 4.5" DS40 Drill Pipe. Mast Clear Ht. 32m (105'). 1 1/8" Drill Line x 10 Lines.
Top Drive:	HQM 250T Unified Block with 250T Warrior Top Drive and Mechanical HPU (Max Static Load 244,600 daN (500,000 lbs)). Max TD rotary @ 150rpm Max torque @ 30,000 ft/lbs (25,000 ft/lbs continuous) Watercourse rated for 51.7 mPa (7,500psi). Complete with optional Axis Steering/Oscillation program.
Table:	ZP175-17.5" (444.5mm) for auxiliary use only.
Well Control:	Class IV, 279mm x 21,000 kPa (11" x 3000 psi) Blow out Preventers with a Class IV 79mm x 34000 kPa (2 7/8" x 5,000 psi) single gut manifold and Cameron Type M3 Style chokes. 36" Degasser with 10" vent line inside the main mud tank.
Accumulator:	1 - 5 station 333L 21,000 kPa (120 gal 3,000 psi) PLC Control Drilling accumulator, with N2 backup system.
Mud Pumps:	2 - JLF-1300 triplex pump - powered by 2 - Detroit Series 2000 (V16-1360hp), w/Pac-Rim Gear box and hydraulic clutch. Rated for 51.7 mPa (7,500 psi).
Mud Tanks:	1 – Mud-Tank 75m3 (500 bbl), 4 Compartment circulating system, with additional pill tank and trip tank. Hydraulic Roof System included for Invert operation. 3 - Agitators situated in suction tanks, low pressure system powered by 2 – 50hp x 5" x 6" Mission Magnum C-pumps.

Last Edit Date: Jan 20/2025 - CV

Solids Control:	2 - Brandt King Cobra shale shakers – 4.0m ³ /min (1,050 gpm) capacity-Adaptable slide to Dryer Shaker Possum Belly.
Water Tank/Doghouse:	Hydraulic raising system-separate sub-storage room. Pason drilling recorder system. 75m ³ (500 bbl) useable water tank.
Combination Building:	1 - 400kw x 480V Cat Gen powered by Cat 3406 engine 1 - 350kw x 480V Cat Gen powered by Cat 3306 engine
Catwalk:	Do-All Hydraulic Skate Catwalk with hydraulic pipe racks. Hydraulically self -levelling catwalk.
Pipe Tubs:	5 - Loader Accessible Range 2 tubs
Tubulars:	400 – 114mm (4 ½") - DS40, SS-105 Range 2 Drill pipe 80 – 114mm (4 ½") - DS40 Range 2 Welded HWDP 16 – 159mm (6 ½") x 4 ½" XH, Range 2 Drill Collars 2 – 203mm (8") x 6 5/8" Reg Range 2 Drill Collars
Boiler:	1 - 125hp Saskatoon Boiler with self-contained 8m ³ (2,100 gal) water tank
Rig Mats:	15 - 8' X 40' 3 Runner Rig matting included in inventory 6 – 8' x 20' 3 Runner Rig matting included in inventory