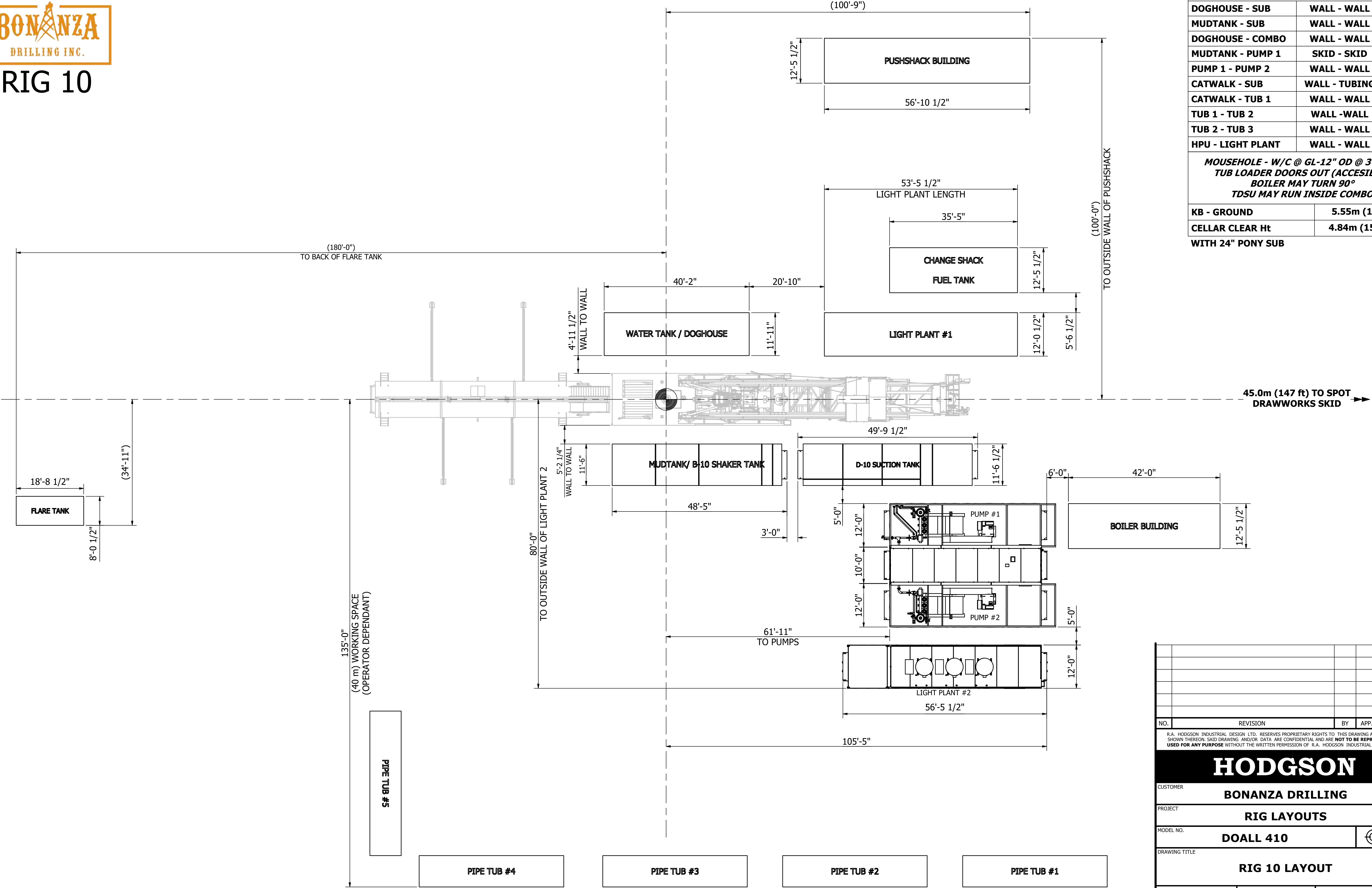




RIG 10




SPOTTING DISTANCES

DOGHOUSE - SUB	WALL - WALL	51"
MUDTANK - SUB	WALL - WALL	62"
DOGHOUSE - COMBO	WALL - WALL	250"
MUDTANK - PUMP 1	SKID - SKID	59"
PUMP 1 - PUMP 2	WALL - WALL	68"
CATWALK - SUB	WALL - TUBING	165"
CATWALK - TUB 1	WALL - WALL	N/A
TUB 1 - TUB 2	WALL -WALL	N/A
TUB 2 - TUB 3	WALL - WALL	N/A
HPU - LIGHT PLANT	WALL - WALL	60"

MOUSEHOLE - W/C @ GL-12" OD @ 3° - 60"
TUB LOADER DOORS OUT (ACCESIBLE)
BOILER MAY TURN 90°
TDSU MAY RUN INSIDE COMBO

KB - GROUND	5.55m (18'-2")
CELLAR CLEAR Ht	4.84m (15'-10")

WITH 24" PONY SUB

NO.	REVISION			BY	APP. DATE
R.A. HODGSON INDUSTRIAL DESIGN LTD. RESERVES PROPRIETARY RIGHTS TO THIS DRAWING AND THE DATA SHOWN THEREON. SAID DRAWING AND/OR DATA ARE CONFIDENTIAL AND ARE NOT TO BE REPRODUCED OR USED FOR ANY PURPOSE WITHOUT THE WRITTEN PERMISSION OF R.A. HODGSON INDUSTRIAL DESIGN LTD.					
HODGSON					
CUSTOMER					
BONANZA DRILLING					
PROJECT					
RIG LAYOUTS					
MODEL NO.					
DOALL 410					
DRAWING TITLE					
RIG 10 LAYOUT					
DWN. BY		DATE		SCALE	
L. WAUGHTAL		NOV 04, 2024		1"= 12'-0"	
CHK'D	KJP	APP.	RAH	DWG. NO.	H8446-10
					REV. 0



Rig 10

Inventory Listing

4,500m (15,000') Vertical

27 Loads (plus matting and boiler)

Draw-works:	TSM 850 Rated for 173,000 daN (390,000 lbs) 10 x 1 1/8" drill line. Powered by 1 - Detroit V12-2000 (800hp) w/6 speed Allison transmission. Auxiliary braking by Eaton 324-disc brake.
Substructure:	Do-All Substructure. Hydraulic Self Leveling. KB-Ground 5.5m (18') with 24" risers. Max Static Hook-load 182,000 daN (410,000 lbs) with full setback. Also features a hydraulic rotating mousehole capable of making up and storing a stand of drill pipe (18m). Clear Cellar Height 4.84m (15'1")
Mast:	Do-All Telescopic Range 2 Double Mast. Max static hook load 182,000 daN (410,000 lbs) - 10 lines. Racking board capacity 5670m (18,600') x 4.5" Drill Pipe
Top Drive:	McKissick 250T Unified Block with Can-Rig Electric Top and Electric TDSU (Max Static Load 244,600 daN (500,000 lbs)). Max TD rotary @ 150rpm Max torque @ 30,000 ft/lbs. Water-course rated for 51.7 mPa (7,500psi).
Table:	Emsco Style 17.5" (444.5mm) for auxiliary use only.
Well Control:	Class IV, 279mm x 21,000 kPa (11" x 3000 psi) Blow out Preventers with a Class V 79mm x 35,000 kPa (3" x 5,000 psi) double gut manifold and Cameron Type M3 Style chokes (adaptable to fit remote actuator). 36" Degasser with 10" vent line will be installed inside the main mud tank. 11" x 5000psi BOP available.
Accumulator:	1 - 5 station 460L 21,000 kPa (120 gal 3,000 psi) PLC Control Drilling accumulator, with N2 backup system.
Mud Pumps:	2 - F-1600 AC triplex pumps, powered by 3 - Detroit Series V12 2000 with 700kW Stamford Generators and GE VFD. Rated for 51.7 mPa (7,500 psi).
Mud Tanks:	1 - Shaker Tank 65m3 (430 bbl), 4 Compartment circulating system, with additional pill tank and trip tank. 1 - Suction Tank 65m3 (430 bbl) with mixing shack and pill tank. 5 - Agitators situated in suction tanks, low pressure system powered by 2 – 5 x 6 Mission Magnum C-pumps. Hydraulic Roof System included for Invert operation.
Spill Control:	Rig comes with Katch Kan cellar spill system and 2m3 invert vac system – complete with integrated 2" lines manifolded for ease of vac access in critical areas.

Last Edit Date: Mar 18/25 - CV

Solids Control:	2 – Swaco Max (7.9G) – 4.0m ³ /min (1,050 gpm) capacity-Adaptable slide to Dryer Shaker Possum Belly.
Water Tank/Doghouse:	Hydraulic raising system-separate sub-storage room. Pason drilling recorder system. 60m ³ (400 bbl) useable water tank.
Combination Building:	2 - 540kw x 600V Stamford powered by 2 - 685hp Detroit Series 60 (14L) engines.
Catwalk:	Do-All Hydraulic Skate Catwalk with hydraulic pipe racks. Hydraulically self -levelling catwalk.
Pipe Tubs:	5 - Loader Accessible Range 2 tubs
Tubulars:	500 – 114mm (4 ½") - DS40, S-135 Range 2 Drill Pipe 80 – 114mm (4 ½") - DS40 Range 2 Welded HWDP 20 – 159mm (6 ½") x 4 ½" XH, Range 2 Drill Collars 2 – 203mm (8") x 6 5/8" Reg Range 2 Drill Collars Additional Tubular sizes/quantities available.
Boiler:	1 - 125hp Saskatoon Boiler with self-contained 8m ³ (2,100 gal) water tank
Rig Mats:	18 - 8' X 40' 3 Runner Rig matting included in inventory